






2022

Sustainability Benchmarks Report

Utility sustainability program rankings
for CSAT Awareness





	Overview	2
	Sustainability Programs by Region	3
	Reliability IOUs Munis Coops Customer Intelligence Solutions for CSAT	4
	Advanced Metering Infrastructure (AMI) IOUs Munis Coops AMI and Customer Intelligence	6
	Demand Response IOUs Munis Coops Customer Intelligence Solutions for DR	8
	Dynamic Pricing IOUs Munis Coops Customer Intelligence Solutions for Dynamic Pricing	10
	Energy Efficiency IOUs Munis Coops Customer Intelligence Solutions for EE	12
	Renewables IOUs Munis Coops Customer Intelligence Solutions for Renewables	14
	Appendix Utilities with 100% AMI	16



Sustainability Benchmarking + Raising Awareness with Customer Intelligence = Higher CSAT Scores

When it comes to customer experience and satisfaction scores for utilities, sustainability is very significant. Specifically, low consumer awareness of sustainability programs means lower overall customer satisfaction for utilities. According to the [2021 JD Power Sustainability Index](#), there is "persistently low consumer awareness for utility climate initiatives," with only 23% of electric utility customers showing awareness of company efforts to lower greenhouse gas emissions and less than 50% believing that their utility will reach 100% clean energy by 2050. Similarly, the [American Consumer Satisfaction Index \(ACSI\) Energy Utilities Report 2020-2021](#) showed that consumer scores for a utility's "efforts to support green programs that impact the environment" and "information provided on energy-saving ideas" consistently brought down ratings for investor-owned utilities, municipal utilities, and cooperatives. The good news, however, is that some utilities were able to increase their sustainability awareness in 2021 and improve customer experience as a result.

To increase awareness of sustainability program engagement in the US, BlastPoint's Sustainability Benchmarks Report shows utility professionals how they compare to the rest of the industry in terms of sustainability-related factors and ranks the "top players" in each category. The ranked categories included in the report are:

- Grid reliability
- Advanced Metering Infrastructure (AMI) rollout
- Demand Response adoption
- Dynamic Pricing adoption
- Energy efficiency program adoption
- Deployment of renewables (solar and wind)

We have also included case studies for ways utilities can utilize customer intelligence to improve customer awareness of and engagement with sustainability programs and solutions. The end result? Higher CSAT and sustainability scores.

Methodology

This report is based on BlastPoint's analysis of the US Department of Energy's (DOE's) Energy Information Agency (EIA) 2020 data. Utilities self-report this data, and not all utilities report on all categories. Our findings are based on the available data. We have attributed subsidiaries to their parent company to provide a clearer picture of the industry. We rank utilities by ownership: investor-owned utilities (IOUs), Municipal Utilities (Munis), and Cooperatives (Coops) are ranked separately. Within those three ownership categories, we break rankings down between Residential, Commercial, & Industrial customers, when data in all three categories are available.

Findings

On a high level, the data shows that US utilities have made the most sustainability progress with Advanced Metering Infrastructure (AMI). Across all three ownership categories, we see more utilities at 100% AMI installation, but Coops are the most advanced, with 300+ companies at 100%. These companies are located in every major regions of the US (see map on p. 3).

Municipal utilities in the top 10 have the lowest CAIDI scores, making them the most reliable. For Demand Response (DR), Munis and Coops have a higher percentage of their residential customers enrolled in DR programs than do IOUs. Conversely, more IOUs have been successful at enrolling customers in dynamic pricing, particularly industrial customers. IOUs are the leaders in EE, as well, and the highest impact of EE programs (in terms of energy saved per customer) is for industrial customers, by far. Renewable energy is the category with the lowest scores across the board and is, therefore, a growth area for most utilities.

Who's at the most risk of low customer satisfaction?

Customer intelligence helps utilities identify dissatisfied customers and proactively reach out to meet their needs.

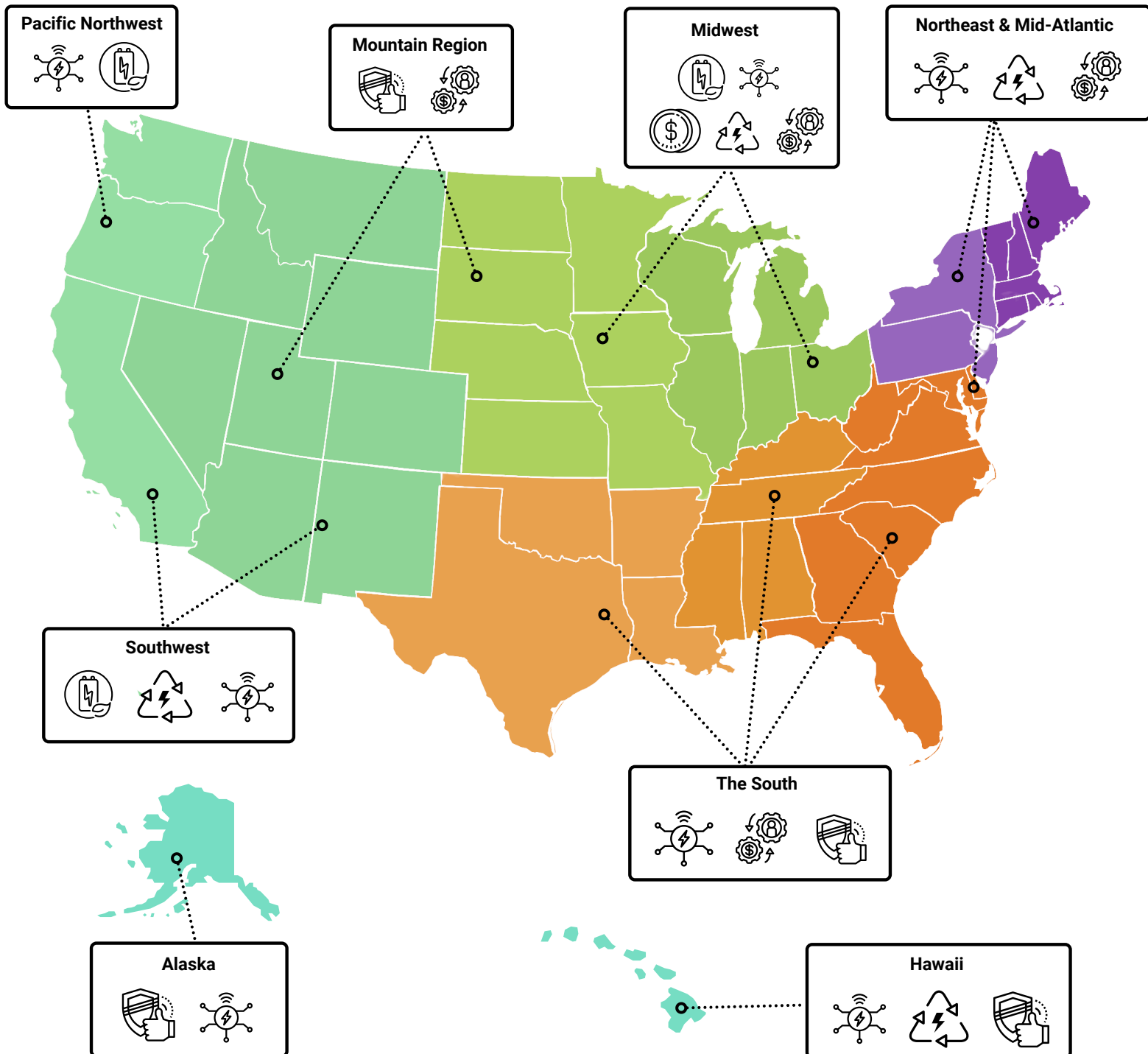
Learn more about CSAT Risk Scores on p. 5.

Sustainability Programs by Region



The icons below show which regions are home to the highest-ranking utilities for each sustainability program. The Midwest is home to the most high-ranking utilities overall, with numerous top 10 companies in the AMI, DR, Dynamic Payment, EE, and Renewables categories.

Utilities in the Northeast & Mid-Atlantic as well the Southwest rank higher for Renewables, but not as high for Reliability. More high-ranking companies for Reliability are located in the Mountain region, the South, and the non-continental US. The Pacific Northwest has several high-ranking companies for AMI and EE.





Few factors are as important as reliability for customer experience scores. Reliability is also a significant consideration for sustainable program adoption, as more customers enrolled in these programs supports a more stable grid and higher reliability scores from customers. Below we utilize Low Customer Average Interruption Duration Index (CAIDI) scores to show which utilities are most reliable, as these scores provide the average outage duration that any given customer

would experience and are therefore a widely used indicator of reliability.

We include the companies with the lowest CAIDI scores both *with* and *without* major event days (MED). The "W/O MED" category normalizes utility reliability performance outside of major events, such as hurricanes, tornadoes, snowstorms, fires, and other disasters that disrupt power.

IOUs			
Utilities	CAIDI Score w/o MED	Utilities	CAIDI Score w/ MED
Black Hills Colorado Electric, LLC (CO)	37.89	Black Hills Colorado Electric, LLC (CO)	39.61
Fitchburg Gas & Elec Light Co (MA)	50.95	Alaska Power and Telephone Co (AK)	51.86
Alaska Electric Light & Power CO (AK)	54.41	UNS Electric Inc (AZ)	53.30
Empire District Electric Co (AR)	56.46	Montana-Dakota Utilities Co (SD)	55.35
Cheyenne Light Fuel & Power (WY)	62.21	Empire District Electric Co (AR)	56.46
Otter Tail Power Co (ND)	62.29	Otter Tail Power Co (ND)	62.30
PacifiCorp (ID)	70.20	Tampa Electric Co (FL)	64.60
Hawaii Electric Light Co Inc (HI)	70.79	Empire District Electric Co (KS)	68.27
Black Hills Power, Inc (WY)	70.85	Alaska Electric Light & Power Co (AK)	69.50
Otter Tail Power Co (SD)	72.00	Hawaii Electric Light Co Inc (HI)	70.79

Munis			
Utilities	CAIDI Score w/o MED	Utilities	CAIDI Score w/ MED
Village of Muscodia (WI)	7.15	Village of Muscodia (WI)	7.15
City of Taunton (MA)	19.99	City of Taunton (MA)	19.99
City of Burbank Water and Power (CA)	22.58	City of Burbank Water & Power (CA)	22.58
Town of Sterling (MA)	27.55	City of Grand Island (NE)	23.93
City of Paducah (KY)	31.09	City of Carthage (MO)	24.30
City of Richland (WA)	31.93	City of Alexandria (MN)	30.00
City of Independence (IA)	32.05	City of Paducah (KY)	31.09
Fort Pierce Utilities Authority (FL)	33.24	City of Richland (WA)	31.93
Town of Massena (NY)	34.25	City of Independence (IA)	32.05
City of Lansing (MI)	34.90	Fort Pierce Utilities Authority (FL)	33.24



Coops			
Utilities	CAIDI Score w/o MED	Utilities	CAIDI Score w/ MED
Jefferson Davis Elec Coop Inc. (LA)	8.05	Clay County Electric Coop Corp (MO)	11.31
Clay County Electric Coop Corp (MO)	11.31	Jefferson Davis Elec Coop, Inc (LA)	18.41
Volunteer Electric Coop (TN)	23.17	Sioux Valley SW Elec Coop (SD)	24.85
Sioux Valley SW Elec Coop (SD)	28.58	Woodruff Electric Coop Corp (AR)	29.54
Woodruff Electric Coop Corp (AR)	29.54	Kauai Island Utility Cooperative (HI)	42.80
Corn Belt Energy Corporation (IL)	42.04	Sioux Valley SW Elec Coop (MN)	45.44
Sioux Valley SW Elec Coop (MN)	44.33	Jones-Onslow Elec Member Corp (NC)	57.00
Oklahoma Electric Coop Inc (OK)	48.93	Jasper County Rural EMC (IN)	59.08
Sawnee Electric Membership Corporation (GA)	50.63	Guadalupe Valley Elec Coop Inc (TX)	59.45
Flint Electric Membership Corp (GA)	51.66	Scenic Rivers Energy Coop (WI)	59.87

Customer Intelligence Solutions for CSAT

Predict Customer CSAT Risk & Engage Proactively

Customer Satisfaction (CSAT) scores for utilities are highly correlated with interventions involving payments and reliability. Regarding reliability, CSAT scores often reflect customers' *perception* of a utility's reliability based not only on outages but also other aspects of their experience with the company. That's why identifying which customers are at the highest risk of giving the company a lower CSAT score is so important.

Utilizing our proprietary AI algorithms, BlastPoint's system learns which data factors within a company's database are most likely to contribute to low CSAT scores. Our technology then creates a risk measurement score for every customer and flags accounts that are in the risk zone. Utilities can then:

- Identify customers with high CSAT risk
- Reveal why those customers are at risk on a granular customer-by-customer, day-by-day basis.
- Target customers with high risk for intervention to increase CSAT scores
- Correlate customer journey touchpoints, program enrollment, and other customer actions with high/low CSAT risk

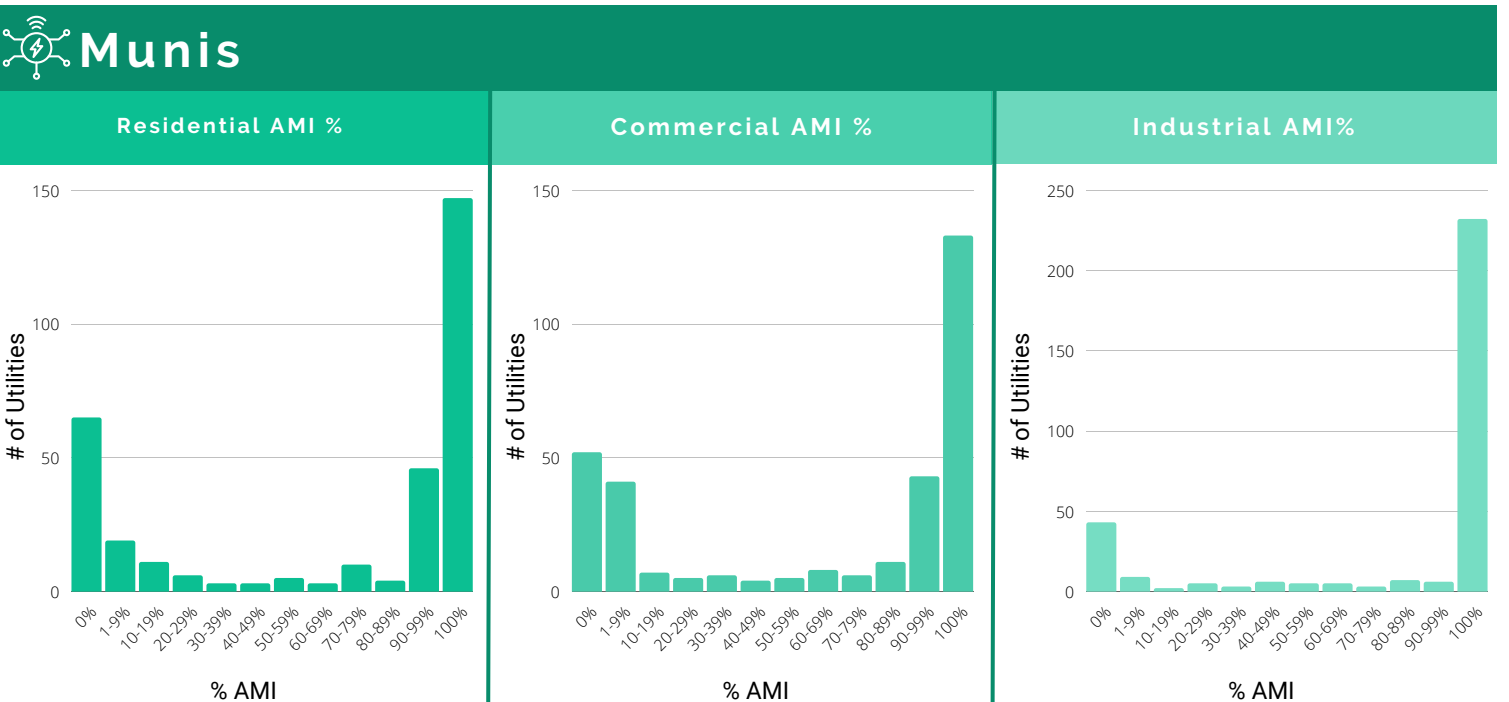
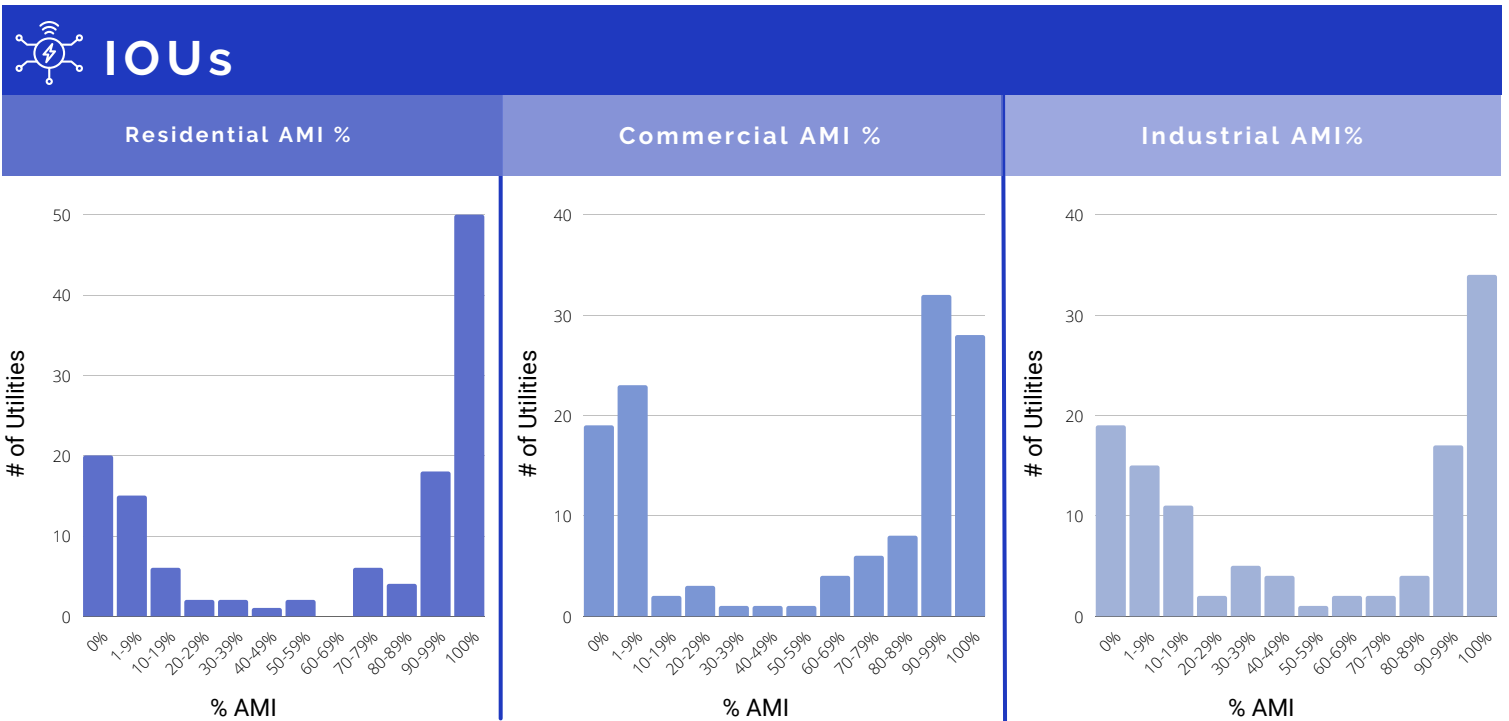


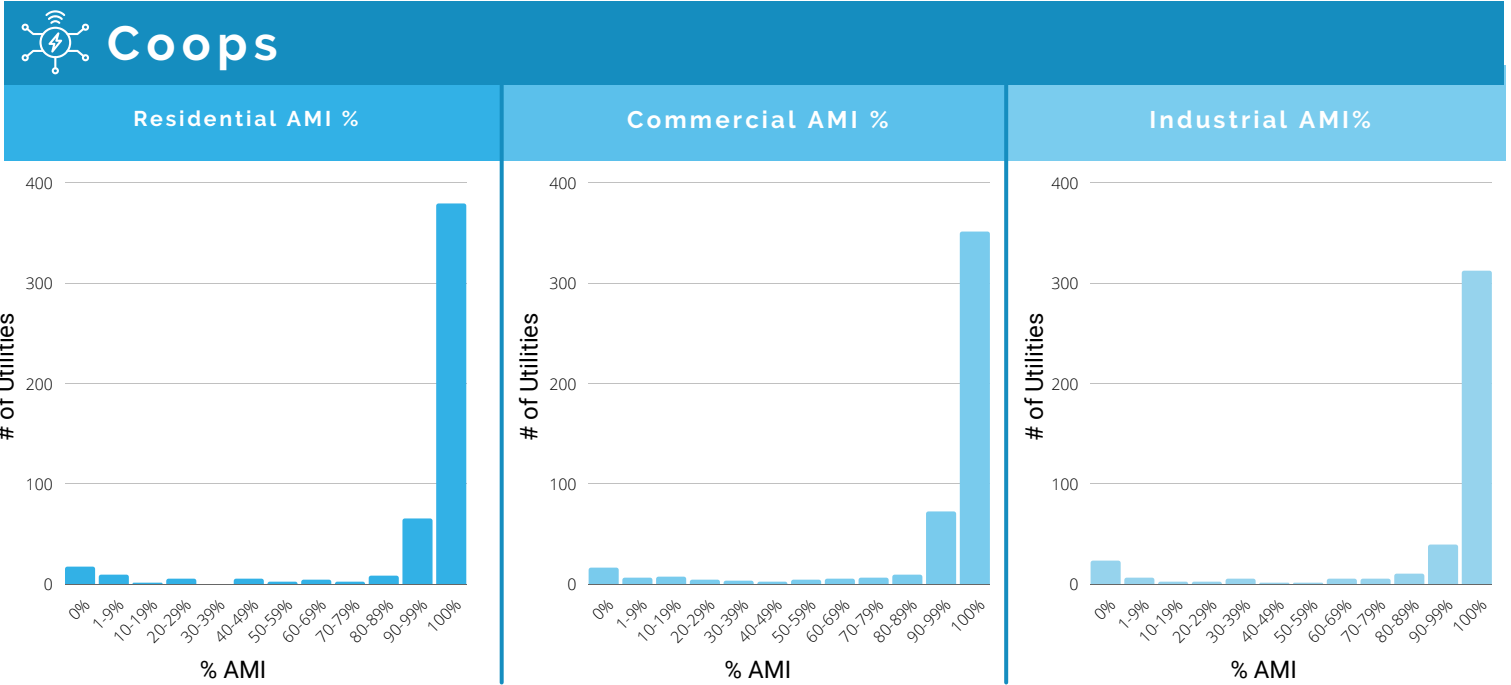
As a result, customers with high CSAT risk feel understood by their utility and that their needs are being met, which motivates them to give their utility a higher score.

Coops are in the lead when it comes to Advanced Metering Infrastructure (AMI). The table to the right shows the average percentage of residential, commercial, and industrial customers with AMI installed for each ownership category. Coops have the highest percentage of residential and commercial installation by far, while IOUs have installed the highest percentage of industrial AMI.

Ownership	AVERAGE of Residential AMI %	AVERAGE of Commercial AMI %	AVERAGE of Industrial AMI %
IOUs	63.7%	60.5%	97.6%
Munis	66.7%	64.8%	78.2%
Coops	93.6%	92.4%	92.3%
Total	80.5%	78.6%	88.5%

Below, we show the distribution of AMI percentages for each ownership category. Please see the Appendix (p.16) for a list of utilities in each category at 100% AMI.





AMI and Customer Intelligence

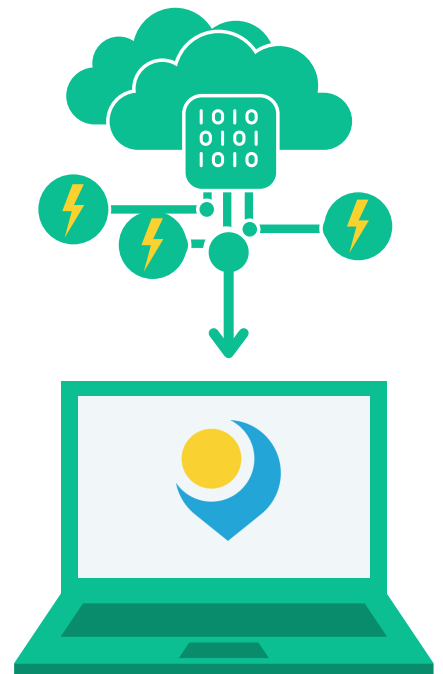
One of the major benefits of AMI is the granularity of usage data constantly being recorded for *every household*. With this wealth of data, utilities have the foundation for understanding their customers' energy usage better than ever before. Utilities can then help individual households do the following:

- Understand usage patterns better
- Adopt energy-saving programs or behaviors that save money
- Feel like they are partnering with their utility to use energy more sustainably

At the same time, utilities are able to:

- Personalize outreach to a higher degree
- Grow sustainable program enrollment
- Raise the profile of sustainability initiatives
- Boost customer satisfaction scores around sustainability

The biggest challenge for many utilities is being able to access and analyze AMI data, making it actionable. BlastPoint's Customer Intelligence Platform has the capability of making real-time AMI data accessible to business users, so they can easily operationalize it and reach customer experience benchmarks.





Demand Response



Demand response gives customers the opportunity to play a significant role in the operation of the electric grid by reducing or shifting their electricity usage during periods where wholesale prices are high or the reliability of the grid is threatened. Environmental benefits of demand response include cutting energy use, reducing the need for fossil-fueled “peaker” power plants, and helping to manage the system challenges from increased renewable energy.

Municipal utilities and Coops have a higher percentage of their residential customers enrolled in DR programs than do IOUs. In fact, there are more Coops with a high percentage of DR enrollment, particularly in the southeast.

Snapping Shoals (GA), Choctawhatche Electric (FL), Hart Electric (GA), Tri-County (SC), and Satilla Rural Electric (GA) are all Coops at or near 100% across all categories.

In the Muni category, Rochester Public Utilities (MN) is the only utility at 100%, and that's only in the industrial category. Alameda Municipal Power (CA) is the leading Muni in the residential and commercial categories.

In the IOU category, on the other hand, Potomac Electric Power (MD) and Delmarva (MD), at 99.3% and 97.2%, respectively, have the highest percentages for residential.

IOUs					
Residential	Customers Enrolled (%)	Commercial	Customers Enrolled (%)	Industrial	Customers Enrolled (%)
Potomac Electric Power Co (MD) an Exelon utility	99.3%	San Diego Gas & Electric Co (CA) a Sempra Energy utility	77.3%	Public Service Co of NM (NM) a PNM Resources utility	65.3%
Delmarva Power (MD) an Exelon utility	97.2%	Delmarva Power (DE) an Exelon utility	62.5%	Commonwealth Edison Co (IL) a Exelon utility	64.4%
Delmarva Power (DE) an Exelon utility	86.5%	Oklahoma Gas & Electric Co (OK)	15.1%	Orange & Rockland Utilities Inc (NY) a Consolidated Edison utility	48.1%
San Diego Gas & Electric (CA) a Sempra Energy utility	68.2%	Otter Tail Power Co (ND)	14.4%	DTE Electric Company (MI)	45.9%
Arizona Public Service Co (AZ) a Pinnacle West Capital utility	64.5%	Otter Tail Power Co (MN)	13.5%	Northern States Power Co (ND) a Xcel Energy utility	45.8%
Baltimore Gas & Electric Co (MD) an Exelon utility	64.0%	Northern States Power Co (MN) a Xcel Energy utility	13.1%	Northern States Power Co (MN) a Xcel Energy utility	43.4%
Otter Tail Power Co (SD)	38.9%	Otter Tail Power Co (SD)	12.7%	El Paso Electric Co (TX) a Sun Jupiter Holdings utility	12.8%
Northern States Power Co (MN) a Xcel Energy utility	34.5%	Potomac Electric Power Co (DC) an Exelon utility	7.5%	Wisconsin Power & Light Co (WI) an Alliant utility	12.3%
Otter Tail Power Co (MN)	33.9%	Delmarva Power (MD) an Exelon utility	6.7%	Northern States Power Co (SD) a Xcel Energy utility	11.5%
Otter Tail Power Co (ND)	33.7%	Northern States Power Co (ND) a Xcel Energy Utility	99.3%	Idaho Power Co (ID) an IDACORP utility	11.5%

Munis					
Residential	Customers Enrolled (%)	Commercial	Customers Enrolled (%)	Industrial	Customers Enrolled (%)
Alameda Municipal Power (CA)	96.7%	Alameda Municipal Power (CA)	97.9%	Rochester Public Utilities (MN)	100.0%
City of Madison (SD)	71.5%	City of Marshall (MN)	49.5%	City of Marshall (MN)	87.3%
City of Marshall (MN)	67.0%	City of Owatonna (MN)	23.7%	City of North Platte (NE)	50.0%
City of Austin (MN)	64.8%	Willmar Municipal Utilities (MN)	14.0%	City of Danville (VA)	25.0%
City of San Antonio (TX)	62.2%	Austin Energy (TX)	12.6%	JEA (FL)	16.7%
City of Owatonna (MN)	61.3%	City of Ames (IA)	6.0%	City of Owatonna (MN)	13.5%
City of Worthington (MN)	50.5%	City of Moorhead (MN)	2.8%	City of Dover (DE)	4.9%
City of Ames (IA)	46.4%	Rochester Public Utilities (MN)	2.1%	City of Dover (OH)	4.5%
City of Glendale (CA)	43.0%	City of Moreno Valley (CA)	1.8%	City of Columbus (OH)	2.6%
City of Alexandria (MN)	33.7%	City of McPherson (KS)	1.8%	City of Newark (DE)	2.8%



Coops					
Residential	Customers Enrolled (%)	Commercial	Customers Enrolled (%)	Industrial	Customers Enrolled (%)
Choctawhatche Elec Coop, Inc (FL)	100.0%	Choctawhatche Elec Coop, Inc (FL)	100.0%	Snapping Shoals EI Member Corp (GA)	100.0%
Hart Electric Member Corp (GA)	100.0%	Snapping Shoals EI Member Corp (GA)	100.0%	Satilla Rural Elec Member Corporation (GA)	100.0%
Snapping Shoals EI Member Corp (GA)	100.0%	Hart Electric Member Corp (GA)	100.0%	Tri-County Electric Coop, Inc (SC)	93.4%
Tri-County Electric Coop, Inc (SC)	99.1%	United Electric Coop Service Inc (TX)	41.2%	Mississippi County Electric Co (AR)	92.4%
Heartland Power Coop (IA)	64.4%	MiEnergy Cooperative (MN)	39.3%	CKenergy Electric Cooperative (OK)	88.5%
Farmers Electric Coop Inc (MO)	64.0%	Dunn County Electric Coop (WI)	32.5%	Cass County Elec Coop Inc (ND)	87.1%
Palmetto Electric Coop Inc (SC)	61.0%	Shelby Electric Coop, Inc (IL)	27.2%	Flint Electric Membership Corp (GA)	79.9%
Blue Ridge Elect Member Corp (NC)	57.2%	Satilla Rural Elec Member Corporation (GA)	16.7%	Coles-Moultrie Electric Coop (IL)	75.0%
Coles-Moultrie Electric Coop (IL)	52.2%	MiEnergy Cooperative (IA)	16.7%	Midwest Electric Member Corp (NE)	73.4%
MiEnergy Cooperative (IA)	46.8%	Verendrye Electric Coop Inc (ND)	16.4%	Medina Electric Coop Inc (TX)	72.4%

Customer Intelligence Solutions for Demand Response

Increasing engagement with DR programs is as easy as finding the customers who are the best fit. BlastPoint's AI-powered system learns which customer data attributes correlate with DR enrollment and flags customers that match. Our platform also enables teams to dive deeper, understanding customer propensity for DR and how best to connect with specific segments.

Some customers with a high propensity for DR may be motivated by reducing their carbon footprint, while others will care more about saving money or having more control of their energy usage. BlastPoint's platform places insights like these at the fingertips of business users, so they can take the guesswork out of knowing what messaging will resonate.



Generate and activate insights with out-of-the-box tools



Understand & prioritize customers based on internal & external data



Match the Right Customers to the Right Programs with automated tools



Engage Target Customers using the highest-impact channels & messaging



- 1,000% Increase in page views**
- Digital Engagement Rates 300% above industry benchmarks**
- 55% increase in enrollment**



More IOUs have been successful at enrolling customers in dynamic pricing, particularly industrial customers. For both Munis and Coops, there are a handful of utilities that can boast near-universal enrollment in their dynamic pricing programs, including the City of St. Marys (OH) and Eastern Iowa Light & Power Coop (IA), which reported 100% residential and commercial enrollment.

Regionally, there is higher commercial and industrial enrollment overall in the upper midwest and northeast, while high residential enrollment is scattered across the country.

Note that industrial data for Munis and Coops have not been reported, so we have included only residential and commercial data for those categories below.

IOUs					
Residential	Customers Enrolled (%)	Commercial	Customers Enrolled (%)	Industrial	Customers Enrolled (%)
Southwestern Electric Power (AR) an American Electric Power utility	100.0%	Southwestern Electric Power (AR) an American Electric Power utility	98.9%	Wisconsin Electric Power Co. (WI) a WEC Energy Group utility	100.0%
Southwestern Electric Power (TX) an American Electric Power utility	100.0%	San Diego Glass & Electric (CA) a Sempra Energy utility	97.2%	Otter Tail Power Co. (MN)	100.0%
Public Service Co of Oklahoma (OK) an American Electric Power utility	100.0%	Southern California Edison Co. (CA) an Edison International utility	91.9%	Green Mountain Power Corp. (VT) an Energir utility	100.0%
Southwestern Electric Power (LA) an American Electric Power utility	100.0%	Pacific Gas & Electric (CA)	89.4%	Fitchburg Gas & Elec Light Co (MA) a Unutil utility	100.0%
Potomac Electric Power Co. (MD) an Exelon utility	99.3%	Public Service Co. of Oklahoma (OK) an American Electric Power utility	85.1%	Northwestern Wisconsin Elec (WI) a WEC Energy Group utility	100.0%
Delmarva Power (MD) an Exelon utility	97.2%	Delmarva Power (DE) an Exelon utility	62.5%	Northern States Power Co. (MI) an Xcel Energy utility	100.0%
Baltimore Gas & Electric Co. (MD) an Exelon utility	96.5%	United Illuminating Co. (CT) an UIL Holdings utility	27.3%	MidAmerican Energy Co. (IL) a Berkshire Hathaway Energy utility	100.0%
Delmarva Power (DE) an Exelon utility	86.5%	Northern States Power Co. (WI) an Xcel Energy utility	24.1%	North Central Power Co, Inc. (WI)	100.0%
San Diego Gas & Electric Co. (CA) a Sempra Energy utility	77.2%	Madison Gas & Electric Co. (WI)	21.5%	El Paso Electric Co. (NM)	100.0%
Arizona Public Service Co. (AZ) a Pinnacle West Capital utility	61.5%	Wisconsin Electric Power Co. (WI) a WEC Energy Group utility	20.3%	Southwestern Electric Power (AR) an American Electric Power utility	98.9%

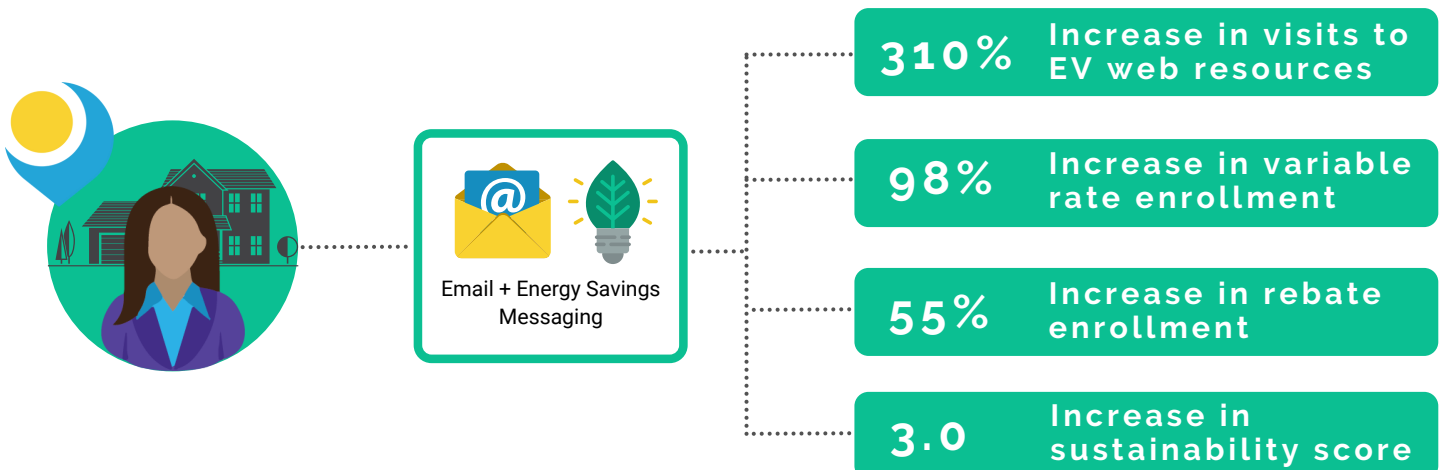
Munis			
Residential	Customers Enrolled (%)	Commercial	Customers Enrolled (%)
Benton County (TN)	100.0%	City of Cerritos (CA)	100.0%
City of Glasgow (KY)	100.0%	City of St Marys (OH)	100.0%
City of St Marys (OH)	100.0%	City of Burbank Water & Power (CA)	98.7%
Tullahoma Board Public Utils (TN)	100.0%	Tullahoma Board - Public Utils (TN)	98.1%
City of Fort Collins (CO)	99.8%	City of Glasgow (KY)	97.9%
Fayetteville PWC (NC)	99.2%	Fayetteville PWC (NC)	97.6%
Waupun Utilities (WI)	4.0%	Benton County (TN)	96.2%
Town of Sterling (MA)	2.3%	Waupun Utilities (WI)	29.1%
City of Richland Center (WI)	2.2%	Los Angeles Dept of Water & Power (CA)	25.4%
City of Evansville (WI)	2.0%	Oconomowoc Utilities (WI)	23.4%



Coops			
Residential	Customers Enrolled (%)	Commercial	Customers Enrolled (%)
Eastern Iowa Light & Power Coop (IA)	100.0%	Eastern Iowa Light & Power Coop (IA)	100.0%
Hendricks County Rural EMC (IN)	100.0%	Lorain-Medina REC, Inc. (OH)	100.0%
Lorain-Medina REC, Inc. (OH)	100.0%	Maquoketa Valley Rrl Elec Coop (IA)	100.0%
Maquoketa Valley Rrl Elec Coop (IA)	100.0%	North Central Elec Coop, Inc. (OH)	100.0%
North Central Elec Coop, Inc. (OH)	100.0%	Rio Grande Electric Coop, Inc. (TX)	100.0%
Oklahoma Electric Coop, Inc. (OK)	100.0%	Southeast Colorado Power Assn (CO)	99.9%
Rio Grande Electric Coop, Inc. (TX)	100.0%	Black Hills Electric Coop, Inc. (SD)	98.0%
Flathead Electric Coop, Inc. (MT)	98.7%	Oklahoma Electric Coop, Inc. (OK)	95.9%
Black Hills Electric Coop, Inc. (SD)	59.2%	Hendricks County Rural EMC (IN)	83.6%
Coast Electric Power Assn. (MS)	33.2%	Adams-Columbia Electric Coop (WI)	49.2%

Customer Intelligence Solutions for Dynamic Pricing

Which customers will be most interested in and best served by dynamic pricing? Customer intelligence makes it easy to understand which customer behaviors correlate with enrollment, and then to engage customers accordingly. One of BlastPoint's utility partners utilized our AI-powered platform to target EV customers with information about their dynamic pricing program. As a result, they saw engagement with related digital resources and enrollment in the program go way up. This partner also saw their JD Power sustainability ranking climb by 3 points in 2021.





Enrolling more customers in energy efficiency programs not only increases sustainability but also helps mitigate high bills that cause customers to fall behind on payments. The data shows that the highest impact of EE programs by far is for industrial customers. Utilities in Minnesota - Otter Tail Power Co. (IOU) and Rochester Public Utilities (Muni) - are leaders in industrial EE.

DTE (IOU) have saved the most energy through commercial EE programs. For residential engagement, DTE is again at the top of the list, along with North Carolina's Four County Electric Member Corp (Coop).

In terms of region, there are several upper midwestern utilities on the top 10 EE lists, as well as those from the southwest and the northwest.

Meanwhile, Florida's Ready Creek (Muni) and Michigan's

IOUs

Residential	MWh Saved per Customer	Commercial	MWh Saved per Customer	Industrial	MWh Saved per Customer
DTE Electric Company (MI)	10.0	DTE Electric Company (MI)	130.7	Otter Tail Power Co. (MN)	28,278.2
Otter Tail Power Co. (MN)	5.7	Otter Tail Power Co. (SD)	52.6	UNS Electric, Inc. (AZ) a UniSource Energy utility	6,599.3
Tucson Electric Power Co. (AZ) a UniSource Energy utility	3.5	NSTAR Electric Company (MA) an Eversource utility	47.1	Southwestern Public Service (NM) an American Electric Power utility	3,274.8
San Diego Gas & Electric Co. (CA) a Sempra Energy utility	3.4	Potomac Electric Power Co. (MD) an Exelon utility	44.8	Public Service Co of Colorado (CO) a Xcel Energy utility	1,997.4
Southwestern Public Service Co. (NM) an American Electric Power utility	3.4	Commonwealth Edison Co. (IL) an Exelon utility	35.0	MidAmerican Energy Co. (IL) a Berkshire Hathaway utility	1,964.6
UNS Electric, Inc. (AZ) a UniSource Energy utility	3.3	Northern States Power Co. (MN) a Xcel Energy utility	34.3	Northern States Power Co (MN) a Xcel Energy utility	1,698.3
Northern States Power Co. (MN) a Xcel Energy utility	3.3	PacifiCorp (WA) a Berkshire Hathaway utility	31.1	Public Service Co. of NM (NM) a PNM Resources utility	1,182.8
Entergy Arkansas, LLC (AR)	3.1	Otter Tail Power Co. (MN)	30.6	Southern Indiana Gas & Elec (IN) a Vectren utility	1,065.9
Southwestern Electric Power Co. (AR) an American Electric Power utility	2.9	Ohio Power Co. (OH) an American Electric Power utility	26.8	Consumers Energy Co. (MI) a CMS Energy utility	933.7
Dayton Power & Light (OH) an AES utility	2.9	ALLETE, Inc. (MN)	26.7	Niagara Mohawk Power Corp. (NY) a National Grid utility	707.8

Munis

Residential	MWh Saved per Customer	Commercial	MWh Saved per Customer	Industrial	MWh Saved per Customer
City of Moreno Valley (CA)	2.0	Reedy Creek Improvement Dist. (FL)	304.9	Rochester Public Utilities (MN)	72,359.0
Shakopee Public Utilities Comm (MN)	1.8	City & County of San Francisco (CA)	79.1	City of Fort Collins (CO)	5,880.8
Austin Energy (TX)	1.5	City of Longmont (CO)	37.6	Austin Energy (TX)	3,659.9
City of Riverside (CA)	1.3	City of Owatonna (MN)	36.4	City of Roseville (CA)	2,891.0
City of Holland (MI)	1.2	City of Vernon (CA)	28.0	City of Idaho Falls (ID)	1,509.0
Village of Fairport (NY)	1.2	City of Sturgis (MI)	26.8	Town of Wallingford (CT)	1,093.8
City of Burlington Electric (VT)	1.0	City of Santa Clara (CA)	25.6	City of Austin (MN)	970.0
City of Lansing (MI)	0.9	City of Chaska (MN)	25.5	Wilmar Municipal Utilities (MN)	959.0
City of Fort Collins (CO)	0.9	Austin Energy (TX)	23.8	City of Richland (WA)	627.4
Cedar Falls Utilities (IA)	0.9	Rochester Public Utilities (MN)	23.7	Lincoln Electric System (NE)	594.7



Coops

Residential	MWh Saved per Customer	Commercial	MWh Saved per Customer	Industrial	MWh Saved per Customer
Four County Elec Member Corp (NC)	7.1	Peninsula Light Company (WA)	29.7	Johnson County Rural EMC (IN)	4,647.1
Johnson County Rural EMC (IN)	4.6	Freeborn-Mower Electric Coop. (MN)	26.9	Sulphur Springs Valley EC, Inc. (AZ)	3,335.0
MiEnergy Cooperative (IA)	3.8	Riverland Energy Coop. (WI)	25.2	Heartland Power Coop. (IA)	3,006.1
MiEnergy Cooperative (MN)	3.4	Dunn County Electric Coop. (WI)	23.1	Snapping Shoals EI Member Corp. (GA)	1,384.4
Central Electric Coop Inc. (OR)	3.1	Jackson County Rural EMC (IN)	19.2	Lakeview Light & Power (WA)	149.8
Southern Maryland Elec Coop Inc. (MD)	2.9	High Plains Power Inc. (WY)	13.0	MiEnergy Cooperative (IA)	139.4
Heartland Power Coop (IA)	2.9	MiEnergy Cooperative (MN)	12.8	Freeborn-Mower Electric Coop. (MN)	132.2
Big Bend Electric Coop, Inc. (WA)	2.4	Central Electric Coop, Inc. (OR)	12.7	Flathead Electric Coop, Inc. (MT)	106.4
Freeborn-Mower Electric Coop. (MN)	2.3	Southern Maryland Elec Coop, Inc. (MD)	10.7	MiEnergy Coop. (MN)	98.5
Midwest Energy Cooperative (MI)	2.3	United Power, Inc. (CO)	10.2	Umatilla Electric Coop Assn (OR)	80.1

Customer Intelligence Solutions for Energy Efficiency

BlastPoint's utility partner wanted to promote both sustainability and energy equity by enrolling income-eligible as well as higher-income residential customers in EE programs. Customer intelligence revealed an income-eligible segment with both a high propensity for EE programs and a high percentage of renters, allowing our

partner to target customers with only *relevant* EE offerings instead of those more appropriate for high-income homeowners. When utilities target low-income customers with programs that can actually help save energy and money, they have a better experience, and utilities boost program enrollment up to 20%.



EE Segment 1

- High Propensity for EE
- Low Income
- Renters
- Heavy Facebook users
- Most are single
- Many have received energy assistance

Demand Response/
Variable Rates

Energy Usage Report &
Resources

Paperless Billing &
Communications



EE Segment 2

- High Propensity for EE
- High Income
- Home Owners
- Heavy LinkedIn users
- Most are married
- High interest in energy-related technology

EE Appliance Rebates

EV Rates & Rebates

Smart Meters



EE Segment 3

- High propensity for EE
- Middle income
- Home owners & renters
- Heavy cellphone use
- Some married, some single
- Scored high for green values

Energy Usage Tracking

Demand Response/
Variable Rates

Renewable Energy



Renewables are a growth opportunity for utilities in all three ownership categories. IOUs have the most capacity generated by renewables, particularly residential solar. However, companies on the top 10 lists report much lower percentages of renewables enrollment than other sustainability programs. The highest percentages across all categories are for industrial customers.

Electric Light Co. has 37.1% of industrial customers and 6.1% of commercial customers enrolled. Maui Electric Co. and Hawaiian Electric Co. have enrolled 9.3% and 5.1% of commercial customers, respectively. IOUs in the southwest, such as Arizona Public Service Co., Southern California Edison, and San Diego Gas & Electric, also rank highly. California utilities dominate the Muni category, while the Coop list has a wider geographic representation.

Hawaiian IOUs, recently consolidated, stand out. Hawaii

IOUs		Average Solar Capacity (MW):		93.26 Residential	Average Wind Capacity (MW):		0.15 Residential
				48.09 Commercial			1.17 Commercial
				15.51 Industrial			1.09 Industrial
Residential	Customers Enrolled (%)	Commercial	Customers Enrolled (%)	Industrial	Customers Enrolled (%)		
Arizona Public Service Co (AZ) a Pinnacle West Capital utility	10.1%	Maui Electric Co Ltd (HI) a Hawaiian Electric Industries utility	9.3%	Northern States Power Co (MN) a Xcel Energy utility	45.0%		
Southern California Edison Co (CA) an Edison International utility	8.4%	Hawaii Electric Light Co Inc (HI) a Hawaiian Electric Industries utility	6.1%	Hawaii Electric Light Co Inc (HI) a Hawaiian Electric Industries utility	37.1%		
Atlantic City Electric Co (NJ) an Exelon utility	7.4%	Hawaiian Electric Co Inc (HI) a Hawaiian Electric Industries utility	5.1%	San Diego Gas & Electric Co (CA) a Sempra Energy Utility	23.5%		
Tucson Electric Power Co (AZ) a UniSource Energy utility	7.1%	San Diego Gas & Electric Co (CA) a Sempra Energy utility	2.8%	Fitchburg Gas & Elec Light Co (MA) a Unitol utility	17.2%		
Fitchburg Gas & Elec Light Co (MA) a Unitol utility	7.0%	Evergy Metro (MO)	2.5%	Wisconsin Electric Power Co (WI) a WEC Energy utility	12.8%		
Nevada Power Co (NV) a Berkshire Hathaway utility	6.8%	Interstate Power and Light Co (IA) an Alliant utility	2.3%	NSTAR Electric Company (MA) an Eversource utility	10.1%		
El Paso Electric Co (NM)	6.2%	Pacific Gas & Electric Co (CA)	2.3%	Evergy Missouri West (MO)	9.0%		
PacifiCorp (UT) a Berkshire Hathaway utility	5.3%	Tucson Electric Power Co (AZ) a UniSource Energy utility	2.2%	Citizens Electric Co (PA)	7.7%		
Massachusetts Electric Co (MA) a National Grid utility	4.9%	Potomac Electric Power Co (DC) an Exelon utility	2.1%	Sierra Pacific Power Co (NV) a NV Energy utility	7.2%		
Public Service Co of NM (NM) a PNM Resources utility	4.8%	Atlantic City Electric Co (NJ) an Exelon utility	2.1%	Atlantic City Electric Co (NJ) an Exelon utility	6.6%		

Munis		Average Solar Capacity (MW):		3.69 Residential	Average Wind Capacity (MW):		0.01 Residential
				1.99 Commercial			0.01 Commercial
				.51 Industrial			0.00 Industrial
Residential	Customers Enrolled (%)	Commercial	Customers Enrolled (%)	Industrial	Customers Enrolled (%)		
City of Moreno Valley (CA)	21.3%	City of Palo Alto (CA)	2.8%	Wyandotte Municipal Serv Comm (MI)	100.0%		
City of Roseville (CA)	10.6%	City of Lodi (CA)	2.8%	City of Fort Collins (CO)	71.4%		
Groton Dept of Utilities (CT)	6.6%	City of Moreno Valley (CA)	2.6%	City of Cartersville (GA)	60.0%		
City of Palo Alto (CA)	4.5%	Wyandotte municipal Serv Comm (MI)	2.5%	Village of Muscodia (WI)	33.3%		
City of Riverside (CA)	4.5%	Village of Prairie Du Sac (WI)	2.4%	City of Vineland (NJ)	20.0%		
City of Colton (CA)	4.2%	City of Burlington Electric (VT)	2.2%	City of Azusa (CA)	21.8%		
City of Anaheim (CA)	3.8%	City of Colorado Springs (CO)	2.0%	City of Springfield (OR)	18.2%		
Los Angeles Dept of Water & Power (CA)	3.7%	Village of New Glarus (WI)	1.8%	City of Burlington Electric (VT)	11.1%		
City of Redding (CA)	3.6%	Los Angeles Dept of Water & Power (CA)	1.8%	City of Newark (DE)	8.9%		
City of Vineland (NJ)	3.5%	City of Riverside (CA)	1.6%	City of Kaukauna (WI)	8.3%		

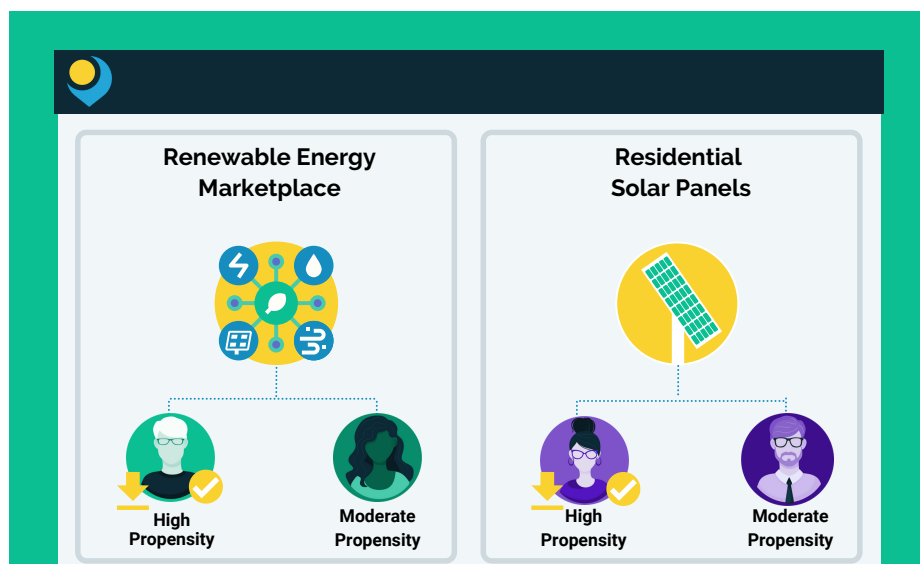


Coops		Average Solar Capacity (MW):		1.73 Residential	Average Wind Capacity (MW):		0.04 Residential
				.53 Commercial			0.04 Commercial
				.27 Industrial			0.04 Industrial
Residential	Customers Enrolled (%)	Commercial	Customers Enrolled (%)	Industrial	Customers Enrolled (%)		
Tri-County Electric Coop, Inc (OK)	19.2%	Southwestern Electric Coop Inc (NM)	28.6%	Magnolia Electric Power Assn (MS)	41.7%		
Kauai Island Utility Cooperative (HI)	15.2%	Tri-County Electric Coop Inc (OK)	10.4%	Corn Belt Energy Corporation (IL)	33.3%		
Scenic Rivers Energy Coop (IL)	8.3%	Kauai Island Utility Cooperative (HI)	7.6%	Mountain Parks Electric, Inc (CO)	21.4%		
United Power, Inc (CO)	6.7%	MiEnergy Cooperative (IA)	5.6%	Choptank Electric Cooperative, Inc (MD)	20.0%		
Otero County Electric Coop Inc (NM)	6.4%	MiEnergy Cooperative (MN)	4.4%	New Hampshire Elec Coop Inc (NH)	12.9%		
Trico Electric Cooperative Inc (AZ)	6.3%	Sulpher Springs Valley E C Inc. (AZ)	3.8%	Holy Cross Electric Assn, Inc. (CO)	10.5%		
Valley Electric Assn, Inc (AZ)	5.5%	Agralite Electric Coop (MN)	3.4%	Shenandoah Valley Elec Coop (VA)	9.7%		
Washington Electric Coop (VT)	5.4%	Eastern Iowa Light & Power Coop (IA)	2.7%	Ozarks Electric Coop Corp (AR)	6.5%		
MiEnergy Cooperative (IA)	5.2%	High Plains Power Inc (WY)	2.6%	Prince George Electric Coop (VA)	5.9%		
Vermont Electric Cooperative, Inc (VT)	5.0%	Trico Electric Cooperative Inc (AZ)	2.2%	Sawnee Electric Membership Corp (GA)	4.0%		

Customer Intelligence Solutions for Renewables

Many utility customers know what renewable energy is, but fewer know how - or if - they can access it. Boosting customer use of renewables begins with understanding customers themselves and providing them with renewable energy options most relevant to their budget and personal priorities. Giving customers feasible options for renewables also boosts

their faith in utilities' efforts to combat climate change, leading to higher sustainability scores. With the BlastPoint Customer Intelligence Platform, accessible AI tools enable users to quickly identify the best-fit customer segments for specific renewable energy programs, then to easily download .csv files for easy targeting.



Appendix - IOUs with 100% AMI

AMI IOU Residential 100%

Arkansas
Oklahoma Gas & Electric Co

Arizona
Arizona Public Service Co

California
Southern California Edison Co

Colorado
Black Hills Colorado Electric, LLC

Washington DC
Potomac Electric Power Co

Delaware
Delmarva Power

Florida
Florida Power & Light Co
Gulf Power Co

Georgia
Georgia Power Co

Illinois
Ameren Illinois Company
Commonwealth Edison Co

Indiana
Duke Energy Indiana, LLC
Southern Indiana Gas & Elec Co

Kansas
Energy Metro

Kentucky
Duke Energy Kentucky

Louisiana
Cleco Power LLC

Massachusetts
Fitchburg Gas & Elec Light Co

Maryland
Delmarva Power
Potomac Electric Power Co

Maine
Central Maine Power Co

Michigan
DTE Electric Company
Upper Peninsula Power Company

Missouri
Energy Metro
Energy Missouri West

Montana
Black Hills Power, Inc.

North Carolina
Duke Energy Carolinas, LLC

New Hampshire
Unitil Energy Systems

Nevada
Nevada Power Co
Sierra Pacific Power Co

Ohio
Duke Energy Ohio Inc

Oklahoma
Oklahoma Gas & Electric Co
Public Service Co of Oklahoma

Oregon
PacifiCorp
Portland General Electric Co

Pennsylvania
Citizens Electric Co
Metropolitan Edison Co
PECO Energy Co
Pennsylvania Electric Co
Pennsylvania Power Co
PPL Electric Utilities Corp
Wellsborough Electric Co
West Penn Power Company

South Carolina
Duke Energy Carolinas, LLC

South Dakota
Black Hills Power, Inc.
NorthWestern Energy

Texas
Entergy Texas Inc.

Vermont
Green Mountain Power Corp

Wisconsin
Wisconsin Power & Light Co

Wyoming
Black Hills Power, Inc.
Cheyenne Light Fuel & Power

AMI IOU Commercial 100%

Arkansas
Oklahoma Gas & Electric Co

California
Pacific Gas & Electric Co.
PacifiCorp

Washington DC
Potomac Electric Power Co

Delaware
Delmarva Power

Florida
Florida Power & Light Co
Gulf Power Co

Illinois
Commonwealth Edison Co

Indiana
Duke Energy Indiana, LLC
Southern Indiana Gas & Elec Co

Kentucky
Duke Energy Kentucky

Maryland
Baltimore Gas & Electric Co
Delmarva Power
Potomac Electric Power Co

Maine
Central Maine Power Co

Montana
Black Hills Power, Inc.

Nevada
Nevada Power Co

Oklahoma
Oklahoma Gas & Electric Co

Oregon
PacifiCorp

Pennsylvania
Citizens Electric Co
Metropolitan Edison Co
Pennsylvania Electric Co
Pennsylvania Power Co
PPL Electric Utilities Corp
Wellsborough Electric Co

South Dakota
Black Hills Power, Inc.

Wyoming
Black Hills Power, Inc.
Cheyenne Light Fuel & Power

AMI IOU Industrial 100%

Alabama
Alabama Power Co

Arkansas
Oklahoma Gas & Electric Co

Arizona
Arizona Public Service Co
Tucson Electric Power Co
UNS Electric, Inc

California
PacifiCorp

Delaware
Delmarva Power

Florida
Florida Power & Light Co

Illinois
Ameren Illinois Company
Commonwealth Edison Co

Indiana
Duke Energy Indiana, LLC
Southern Indiana Gas & Elec Co

Kansas
Energy Kansas Central, Inc

Kentucky
Duke Energy Kentucky

Massachusetts
Fitchburg Gas & Elec Light Co

Maryland
Delmarva Power

Missouri
Energy Metro
Energy Missouri West

Montana
Black Hills Power, Inc.

North Carolina
Duke Energy Carolinas, LLC

Ohio
Duke Energy Ohio Inc

Oklahoma
Oklahoma Gas & Electric Co

Oregon
PacifiCorp

Pennsylvania
Citizens Electric Co
Duquesne Light Co
PECO Energy Co
PPL Electric Utilities Corp
Wellsborough Electric Co

South Carolina
Dominion Energy South Carolina, Inc
Duke Energy Carolinas, LLC

South Dakota
Black Hills Power, Inc

Vermont
Green Mountain Power Corp

Wisconsin
Madison Gas & Electric Co

Wyoming
Black Hills Power, Inc.

Appendix - Municipal with 100% AMI

AMI Municipal Residential 100%

Alabama
Albertville Municipal Utilities Board
City of Andalusia
City of Opelika
City of Scottsboro
City of Tarrant
City of Troy
Cullman Power Board
Fort Payne Improvement Authority
Guntersville Electric Board
Arkansas
City of Hope
City of North Little Rock
Conway Corporation
California
City of Burbank Water and Power
City of Glendale
City of Moreno Valley
City of Santa Clara
Connecticut
Groton Dept of Utilities
Delaware
City of Newark
Florida
City of Lake Worth
City of Lakeland
City of Ocala
City of Tallahassee
Orlando Utilities Comm
Georgia
City of Calhoun
City of College Park
City of Griffin
Newnan Wtr, Sewer & Light Comm
Iowa
City of Maquoketa
Idaho
City of Idaho Falls
Illinois
Rochelle Municipal Utilities
Indiana
City of Anderson
City of Auburn
City of Lebanon
City of Peru
Kansas
City of Garden City
City of McPherson
Kentucky
City of Bardstown
City of Fulton
City of Glasgow
City of Hickman
City of Hopkinsville
City of Jellico
City of Mayfield Plant Board
City of Murray
City of Paducah
City of Russellville
Louisiana
City of Ruston
Massachusetts
City of Peabody
Town of Braintree
Michigan
City of Bay City
City of Crystal Falls
City of Grand Haven
City of Holland
City of Marquette
City of Sturgis
Minnesota
City of Chaska
Hutchinson Utilities Comm
Willmar Municipal Utilities
Missouri
City of Kirkwood
City of Lebanon
City of Poplar Bluff
City Utilities of Springfield
Mississippi
City of Columbus
City of Holly Springs
City of Oxford
City of Water Valley
City of West Point
North Carolina
City of Concord
City of Wilson
Nebraska
City of Lexington

AMI Municipal Residential 100% Cont.

Ohio
City of Lebanon
City of Piqua
City of St Marys
City of Wadsworth
Oklahoma
City of Claremore
South Carolina
City of Orangeburg
City of Rock Hill
Easley Combined Utility System
South Dakota
City of Pierre
Tennessee
Benton County
Bolivar Energy Authority
Carroll County
City of Alcoa Utilities
City of Clarksville
City of Cleveland
City of Clinton
City of Dayton
City of Dyersburg
City of Fayetteville
City of Greeneville
City of Humboldt
City of Jackson
City of Jellico
City of LaFollette
City of Lawrenceburg
City of Lenoir
City of Lexington
City of Morristown
City of Mt Pleasant
City of Newport
City of Paris
City of Pulaski
City of Rockwood
City of Shelbyville
City of Smithville
City of Sparta
City of Trenton
City of Union City
Columbia Power System
Johnson City
Loudon Utilities Board
Nashville Electric Service
Sevier County Electric System
Town of Erwin
Tullahoma Board-Public Util
Weakley County Mun Elec Sys
Texas
Austin Energy
City of Bryan
City of Denton
City of Georgetown
City of New Braunfels
City of San Antonio
City of San Marcos
City of Seguin
Weatherford Mun Utility System
Utah
City of Logan
Provo City Corp
Spanish Fork City Corporation
Virginia
Bristol Virginia Utilities
City of Danville
City of Harrisonburg
Wisconsin
Cedarburg Light & Water Comm
City of Columbus
City of Kaukauna
City of Marshfield
City of Plymouth
City of Sturgeon Bay
Juneau Utility Comm
New London Electric&Water Util
Oconomowoc Utilities
Village of Mt. Horeb
Village of Prairie Du Sac
Waupun Utilities
Whitehall Electric Utility
Wisconsin Rapids W W & L Comm

AMI Municipal Commercial 100%

Alabama
City of Andalusia
City of Opelika
City of Troy
Cullman Power Board
Fort Payne Improvement Authority
Guntersville Electric Board
Arkansas
City of Hope
Conway Corporation
California
City & County of San Francisco
City of Burbank Water and Power
City of Glendale
Colorado
City of Fountain
Delaware
City of Newark
Florida
City of Lake Worth
City of Lakeland
City of Ocala
Orlando Utilities Comm
Georgia
City of Calhoun
City of Chattanooga
City of College Park
City of Griffin
Newnan Wtr, Sewer & Light Comm
Idaho
City of Idaho Falls
Illinois
City of Peru
Rochelle Municipal Utilities
Indiana
City of Anderson
City of Auburn
City of Peru
Kansas
City of Garden City
Kentucky
City of Bardstown
City of Franklin
City of Fulton
City of Hopkinsville
City of Jellico
City of Mayfield Plant Board
City of Murray
City of Paducah
City of Russellville
Louisiana
City of Ruston
Massachusetts
City of Peabody
Town of Braintree
Town of Sterling
Michigan
City of Bay City
City of Crystal Falls
City of Grand Haven
City of Holland
City of Marquette
City of Sturgis
Coldwater Board of Public Util
Wyandotte Municipal Serv Comm
Minnesota
Hutchinson Utilities Comm
Willmar Municipal Utilities
Missouri
City of Kirkwood
City of Lebanon
City of Poplar Bluff
City Utilities of Springfield
Mississippi
City of Columbus
City of Holly Springs
City of Oxford
City of Water Valley
City of West Point
North Carolina
City of Kinston
City of New Bern
City of Wilson
Ohio
City of Lebanon
City of Piqua
City of St Marys
City of Wadsworth
Oklahoma
City of Claremore
South Carolina
City of Newberry
City of Orangeburg
Easley Combined Utility System

Appendix - Municipal with 100% AMI Cont.

AMI Municipal Commercial 100% Cont.

South Dakota
City of Pierre

Tennessee
Benton County
Bolivar Energy Authority
Carroll County
City of Chattanooga
City of Clarksville
City of Cleveland
City of Clinton
City of Dayton
City of Dyersburg
City of Fayetteville
City of Greeneville
City of Humboldt
City of Jackson
City of Jellico
City of Lawrenceburg
City of Lexington
City of Milan
City of Morristown
City of Mt Pleasant
City of Newport
City of Paris
City of Pulaski
City of Rockwood
City of Shelbyville
City of Smithville
City of Sparta
City of Trenton
City of Union City
Columbia Power System
Johnson City
Loudon Utilities Board
Nashville Electric Service
Sevier County Electric System
Town of Erwin
Tulahoma Board-Public Utils
Weakley County Mun Elec Sys

Texas
City of Denton
City of Floresville
City of Georgetown
City of Seguin
Kerrville Public Utility Board
Weatherford Mun Utility System

Utah
City of Logan
Provo City Corp
Spanish Fork City Corporation

Virginia
Bristol Virginia Utilities
City of Harrisonburg

Wisconsin
Brodhead Water & Lighting Comm
Cedarburg Light & Water Comm
City of Columbus
City of Marshfield
City of Sturgeon Bay
Hartford Electric
Juneau Utility Comm
Oconomowoc Utilities
Village of Mt. Horeb
Village of Prairie Du Sac
Village of Waunakee
Whitehall Electric Utility
Wisconsin Rapids W W & L Comm

AMI Municipal Industrial 100%

Alabama
Albertville Municipal Utilities Board
City of Andalusia
City of Opelika
City of Tarrant
City of Troy
Cullman Power Board
Fort Payne Improvement Authority
Guntersville Electric Board
Sheffield Utilities

AMI Municipal Industrial 100% Cont.

Arkansas
City of Hope
City of North Little Rock
City Water and Light Plant
Conway Corporation

California
City of Anaheim
City of Colton
City of Glendale

Colorado
City of Colorado Springs
City of Fort Collins
Connecticut
Groton Dept of Utilities

Delaware
City of Newark

Florida
City of Lakeland
City of Ocala
Gainesville Regional Utilities
Kissimmee Utility Authority

Georgia
City of Calhoun
City of Chattanooga
City of Griffin
Newnan Wtr, Sewer & Light Comm

Iowa
Board of Water Electric & Communications
City of Maquoketa

Idaho
City of Idaho Falls

Illinois
City of Naperville
City of Peru
Rochelle Municipal Utilities

Indiana
City of Anderson
City of Auburn
City of Peru

Kansas
City of Garden City

Kentucky
City of Bardstown
City of Bowling Green
City of Franklin
City of Fulton
City of Glasgow
City of Hopkinsville
City of Mayfield Plant Board
City of Murray
City of Paducah
City of Russellville

Louisiana
City of Ruston

Massachusetts
City of Holyoke
City of Norwood
City of Peabody
Town of Braintree
Town of Sterling

Michigan
City of Bay City
City of Grand Haven
City of Holland
City of Sturgis
Coldwater Board of Public Util

Minnesota
City of Chaska
Hutchinson Utilities Comm
Willmar Municipal Utilities

Missouri
City of Kirkwood
City of Lebanon
City of Poplar Bluff

Mississippi
City of Columbus
City of Holly Springs
City of Starkville
City of Tupelo
City of Water Valley

North Carolina
Fayetteville Public Works Commission

Nebraska
City of Lexington

Ohio
City of Lebanon
City of Piqua
City of Wadsworth
City of Wapakoneta
City of Westerville

Oklahoma
City of Claremore

AMI Municipal Industrial 100% Cont.

South Carolina
City of Newberry
City of Orangeburg
City of Rock Hill

South Dakota
City of Pierre

Tennessee
Benton County
Bolivar Energy Authority
Carroll County
City of Alcoa Utilities
City of Chattanooga
City of Clarksville
City of Cleveland
City of Clinton
City of Dayton
City of Dickson
City of Dyersburg
City of Etowah
City of Fayetteville
City of Humboldt
City of Jackson
City of LaFollette
City of Lawrenceburg
City of Lenoir
City of Lexington
City of Milan
City of Morristown
City of Mt Pleasant
City of Newport
City of Paris
City of Pulaski
City of Rockwood
City of Shelbyville
City of Smithville
City of Sparta
City of Trenton
City of Union City
Johnson City
Knoxville Utilities Board
Loudon Utilities Board
Maryville Utilities
McMinnville Electric System
Nashville Electric Service
Sevier County Electric System
Town of Erwin
Tulahoma Board-Public Utils
Weakley County Mun Elec Sys

Texas
City of Bryan
City of Georgetown
City of Lubbock
City of San Antonio
City of San Marcos
City of Seguin
Weatherford Mun Utility System

Utah
City of Logan
Spanish Fork City Corporation

Virginia
Bristol Virginia Utilities
City of Danville
City of Harrisonburg

Vermont
City of Burlington Electric

Wisconsin
Algoma Utility Comm
Brodhead Water & Lighting Comm
Cedarburg Light & Water Comm
City of Columbus
City of Evansville
City of Kaukauna
City of Marshfield
City of Menasha
City of Plymouth
City of Richland Center
City of River Falls
City of Stoughton
City of Sturgeon Bay
Hartford Electric
Jefferson Utilities
Juneau Utility Comm
Manitowoc Public Utilities
New London Electric&Water Util
Oconomowoc Utilities
Sun Prairie Utilities
Two Rivers Water & Light
Village of Prairie Du Sac
Village of Waunakee
Waupun Utilities
Whitehall Electric Utility
Wisconsin Rapids W W & L Comm

Appendix - Coop with 100% AMI

AMI Coop Residential 100%

Alaska
Chugach Electric Assn Inc
Kodiak Electric Assn Inc
Matanuska Electric Assn Inc

Alabama
Baldwin County El Member Corp
Central Alabama Electric Coop
Cherokee Electric Coop
Coosa Valley Electric Coop Inc
Covington Electric Coop, Inc
Cullman Electric Coop, Inc
Diverse Power Incorporated
Dixie Electric Coop
Joe Wheeler Elec Member Corp
Marshall-De Kalb Electric Coop
North Alabama Electric Coop
Sand Mountain Electric Coop
Singing River Elec Cooperative
South Alabama Elec Coop, Inc
Southern Pine Elec Coop, Inc
Wiregrass Electric Coop, Inc

Arkansas
Arkansas Valley Elec Coop Corp
Carroll Electric Coop Corp
Clay County Electric Coop Corp
First Electric Coop Corp
Ouachita Electric Coop Corp
Ozarks Electric Coop Corp
Southwest Arkansas E C C
Woodruff Electric Coop Corp

Arizona
Dixie Escalante R E A, Inc
Trico Electric Cooperative Inc

Colorado
Delta Montrose Electric Assn
High West Energy, Inc
Holy Cross Electric Assn, Inc
Intermountain Rural Elec Assn
K C Electric Association
Morgan County Rural Elec Assn
Mountain Parks Electric, Inc
Poudre Valley REA, Inc
San Miguel Power Assn, Inc
Tri-County Electric Coop, Inc
Wheatland Electric Coop, Inc
Y-W Electric Assn Inc
Yampa Valley Electric Assn Inc

Florida
Choctawhatche Elec Coop, Inc
Glades Electric Coop, Inc
Gulf Coast Electric Coop, Inc
Okefenoke Rural El Member Corp
Peace River Electric Coop, Inc
Suwannee Valley Elec Coop Inc
Tri-County Electric Coop, Inc

Georgia
Altamaha Electric Member Corp
Blue Ridge Mountain EMC
Carroll Electric Member Corp
Central Georgia El Member Corp
Coastal Electric Member Corp
Colquitt Electric Membership Corp
Coweta-Fayette El Member Corp
Diverse Power Incorporated
Excelsior Electric Member Corp
Flint Electric Membership Corp
Grady Electric Membership Corp
Habersham Electric Membership Corp
Haywood Electric Member Corp
Irwin Electric Membership Corp
Jackson Electric Member Corp
Mitchell Electric Member Corp
North Georgia Elec Member Corp
Okefenoke Rural El Member Corp
Planters Electric Member Corp
Rayle Electric Membership Corp
Satilla Rural Elec Member Corporation
Snapping Shoals El Member Corp
Southern Rivers Energy
Sumter Electric Member Corp
Tri-County Elec Member Corp
Walton Electric Member Corp
Washington Elec Member Corp

Iowa
Access Energy Coop
Butler County Rural Elec Coop
Consumers Energy
Eastern Iowa Light & Power Coop
Federated Rural Electric Assn
Freeborn-Mower Electric Cooperative
Heartland Power Coop
Iowa Lakes Electric Coop
Linn County REC

AMI Coop Residential 100% Cont.

Iowa Cont.
Maquoketa Valley Rrl Elec Coop
Midland Power Coop
MiEnergy Cooperative
Prairie Energy Coop

Idaho
Fall River Rural Elec Coop Inc
Kootenai Electric Cooperative
Lower Valley Energy Inc
Missoula Electric Coop, Inc
Raft Rural Elec Coop Inc
Salmon River Electric Coop Inc
United Electric Co-op, Inc

Illinois
Coles-Moultrie Electric Coop
Jo-Carroll Energy, Inc
Menard Electric Coop
Southwestern Electric Coop Inc
Wayne-White Counties Elec Coop

Indiana
Bartholomew County Rural E M C
Boone County Rural EMC
Carroll-White REMC
Clark County Rural E M C
Daviness Martin County R E M C
Decatur County Rural E M C
Dubois Rural Electric Coop Inc
Harrison County Rural E M C
Heartland REMC
Hendricks County Rural E M C
Jackson County Rural E M C
Jasper County Rural E M C
Johnson County Rural E M C
Kankakee Valley Rural E M C
NineStar Connect
Noble County R E M C
Northeastern Rural E M C
Paulding-Putman Elec Coop, Inc
South Central Indiana REMC
Southern Indiana R E C, Inc
Tipmont Rural Elec Member Corp
Utilities Dist-Western IN REMC
Western Indiana Energy REMC
Whitewater Valley Rural EMC

Idaho
Fall River Rural Elec Coop Inc
Kootenai Electric Cooperative
Lower Valley Energy Inc
Missoula Electric Coop, Inc
Raft Rural Elec Coop Inc
Salmon River Electric Coop Inc
United Electric Co-op, Inc

Illinois
Coles-Moultrie Electric Coop
Jo-Carroll Energy, Inc
Menard Electric Coop
Southwestern Electric Coop Inc
Wayne-White Counties Elec Coop

Indiana
Bartholomew County Rural E M C
Boone County Rural EMC
Carroll-White REMC
Clark County Rural E M C
Daviness Martin County R E M C
Decatur County Rural E M C
Dubois Rural Electric Coop Inc
Harrison County Rural E M C
Heartland REMC
Hendricks County Rural E M C
Jackson County Rural E M C
Jasper County Rural E M C
Johnson County Rural E M C
Kankakee Valley Rural E M C
NineStar Connect
Noble County R E M C
Northeastern Rural E M C
Paulding-Putman Elec Coop, Inc
South Central Indiana REMC
Southern Indiana R E C, Inc
Tipmont Rural Elec Member Corp
Utilities Dist-Western IN REMC
Western Indiana Energy REMC
Whitewater Valley Rural EMC

Kansas
Alfalfa Electric Coop, Inc
FreeState Electric Coop
Midwest Energy Inc
Pioneer Electric Coop, Inc
Prairie Land Electric Coop Inc
Southern Pioneer Electric Company
Tri-County Electric Coop, Inc (OK)
Victory Electric Coop Assn Inc
Western Coop Electric Assn Inc
Wheatland Electric Coop, Inc

AMI Coop Residential 100% Cont.

Kentucky
Cumberland Valley Electric, Inc.
Farmers Rural Electric Coop Corp
Fleming-Mason Energy Coop Inc
Grayson Rural Electric Coop Corp
Inter County Energy Coop Corp
Jackson Energy Coop Corp
Jackson Purchase Energy Corporation
Kenergy Corp
Licking Valley Rural E C C
Nolin Rural Electric Coop Corp
Owen Electric Coop Inc
Pennyrile Rural Electric Coop
Salt River Electric Coop Corp
Shelby Energy Co-op, Inc
South Kentucky Rural E C C
Taylor County Rural E C C
Tri-County Elec Member Corp
Warren Rural Elec Coop Corp
West Kentucky Rural E C C

Louisiana
Beauregard Electric Coop, Inc
Claiborne Electric Coop, Inc
Northeast Louisiana Power Coop Inc.

Maryland
A & N Electric Coop

Michigan
Cherryland Electric Coop Inc
Great Lakes Energy Coop
Tri-County Electric Coop
Agralite Electric Coop
Beltrami Electric Coop, Inc
BENCO Electric Cooperative
Connexus Energy
Crow Wing Cooperative Power & Light Comp MN
Federated Rural Electric Assn
Freeborn-Mower Electric Cooperative
Heartland Power Coop
Lake Country Power
Lake Region Electric Cooperative
MiEnergy Cooperative
Minnesota Valley Electric Coop
People's Cooperative Services
Runestone Electric Assn
Sioux Valley SW Elec Coop
Stearns Cooperative Elec Assn
Steele-Waseca Cooperative Electric
Wild Rice Electric Coop, Inc
Wright-Hennepin Coop Elec Assn

Missouri
Black River Electric Coop
Boone Electric Coop
Callaway Electric Cooperative
Carroll Electric Coop Corp
Central Missouri Elec Coop Inc
Citizens Electric Corporation
Clay County Electric Coop Corp
Co-Mo Electric Coop Inc
Consolidated Electric Coop
Crawford Electric Coop, Inc
Cuivre River Electric Coop Inc
Farmers Electric Coop, Inc
Intercounty Electric Coop Assn
Laclede Electric Coop, Inc
Osage Valley Elec Coop Assn
Ozark Electric Coop Inc
SEMO Electric Cooperative
Southwest Electric Coop, Inc
Three Rivers Electric Coop
Webster Electric Coop

Mississippi
4-County Electric Power Assn
Coast Electric Power Assn
Delta Electric Power Assn
Dixie Electric Power Assn
East Mississippi Elec Pwr Assn
Magnolia Electric Power Assn
Monroe County Elec Power Assn
North East Mississippi EPA
Northcentral Mississippi E P A
Pearl River Valley El Pwr Assn
Prentiss County Elec Pwr Assn
Singing River Elec Cooperative
Southern Pine Electric Cooperative
Southwest Mississippi E P A
Tombigbee Electric Power Assn

Montana
Fall River Rural Elec Coop Inc
Flathead Electric Coop Inc
Missoula Electric Coop, Inc

Appendix - Coop with 100% AMI

AMI Coop Residential 100% Cont.

North Carolina

Albemarle Electric Member Corp
Blue Ridge Elec Member Corp
Blue Ridge Mountain EMC
Brunswick Electric Member Corp
Carteret-Craven El Member Corp
Edgecombe-Martin County E M C
EnergyUnited Elec Member Corp
Four County Elec Member Corp
French Broad Elec Member Corp
Haywood Electric Member Corp
Jones-Onslow Elec Member Corp
Lumbee River Elec Member Corp
Mecklenburg Electric Cooperative
Mountain Electric Coop, Inc
Pee Dee Electric Member Corp
Randolph Electric Member Corp
Rutherford Elec Member Corp
South River Elec Member Corp
Surry-Yadkin Elec Member Corp
Tideland Electric Member Corp
Union Electric Membership Corp
Wake Electric Membership Corp

North Dakota

Capital Electric Coop, Inc
Cass County Elec Coop Inc
Nodak Electric Coop Inc
Verendrye Electric Coop Inc

Nebraska

High West Energy, Inc
Highline Electric Assn

New Hampshire

New Hampshire Elec Coop Inc

New Mexico

Central New Mexico El Coop, Inc
Central Valley Elec Coop, Inc
Kit Carson Electric Coop, Inc
Rio Grande Electric Coop, Inc
Roosevelt County Elec Coop Inc
Tri-County Electric Coop, Inc

Nevada

Raft Rural Elec Coop Inc

Ohio

Buckeye Rural Elec Coop, Inc
Butler Rural Electric Coop Inc
Consolidated Electric Coop Inc
Licking Rural Electric Inc
Midwest Electric, Inc
Paulding-Putman Elec Coop, Inc
Pioneer Rural Elec Coop, Inc
South Central Power Company
Union Rural Electric Coop, Inc

Oklahoma

Alfalfa Electric Coop, Inc
Arkansas Valley Elec Coop Corp
Canadian Valley Elec Coop, Inc
Choctaw Electric Coop Inc
Cimarron Electric Coop
CKenergy Electric Cooperative
Cookson Hills Elec Coop, Inc
Cotton Electric Coop, Inc
Kay Electric Coop
Lake Region Electric Coop, Inc
Oklahoma Electric Coop Inc
Ozarks Electric Coop Corp
People's Electric Cooperative
Rural Electric Coop, Inc
Southeastern Electric Coop Inc
Southwest Arkansas E C C
Tri-County Electric Coop, Inc
Verdigris Valley Elec Coop Inc

Oregon

Central Electric Coop Inc
Columbia Rural Elec Assn, Inc
Lane Electric Coop Inc
Midstate Electric Coop, Inc
Oregon Trail El Cons Coop, Inc
Umatilla Electric Coop Assn

Pennsylvania

Adams Electric Cooperative Inc
Bedford Rural Elec Coop, Inc
Central Electric Coop, Inc
Northwestern Rural E C A, Inc
REA Energy Coop Inc
Somerset Rural Elec Coop, Inc
Valley Rural Electric Coop Inc

South Carolina

Aiken Electric Coop Inc
Berkeley Electric Coop Inc
Black River Electric Coop, Inc
Edisto Electric Coop, Inc
Haywood Electric Member Corp

AMI Coop Residential 100% Cont.

South Carolina Cont.

Marlboro Electric Coop, Inc
Mid-Carolina Electric Coop Inc
Palmetto Electric Coop Inc
Pee Dee Electric Coop, Inc

South Dakota

Northern Electric Coop, Inc
Rosebud Electric Coop Inc
Sioux Valley SW Elec Coop
Southeastern Electric Coop Inc
West River Electric Assn Inc

Tennessee

Appalachian Electric Coop
Caney Fork Electric Coop, Inc
Cumberland Elec Member Corp
Cumberland Valley Electric, Inc.
Fort Loudoun Electric Coop
French Broad Elec Member Corp
Gibson Electric Members Corp
Meriwether Lewis Electric Coop
Mountain Electric Coop, Inc
Pickwick Electric Coop
Plateau Electric Cooperative
Sequachee Valley Electric Coop
South Kentucky Rural E C C
Southwest Tennessee E M C
Tennessee Valley Electric Coop
Tri-County Elec Member Corp
Upper Cumberland E M C
Volunteer Electric

Texas

Bandera Electric Coop, Inc
Bartlett Electric Coop, Inc
Comanche County Elec Coop Assn
Concho Valley Elec Coop Inc
Cooke County Elec Coop Assn
Deaf Smith Electric Coop, Inc
Deep East Texas Elec Coop Inc
Farmers Electric Coop, Inc
Greenbelt Electric Coop, Inc
Hamilton County Elec Coop Assn
Houston County Elec Coop Inc
Jackson Electric Coop, Inc
Jasper-Newton Elec Coop, Inc
Karnes Electric Coop Inc
Lamar County Elec Coop Assn
Magic Valley Electric Coop Inc
Mid-South Electric Coop Assn
Navasota Valley Elec Coop, Inc
Pedernales Electric Coop, Inc
Rio Grande Electric Coop, Inc
Rusk County Electric Coop, Inc
Sam Houston Electric Coop Inc
San Bernard Electric Coop, Inc
Southwest Arkansas E C C
Taylor Electric Coop Inc
Tri-County Electric Coop, Inc
United Electric Coop Service Inc
Upshur Rural Elec Coop Corp

Utah

A, Inc
Empire Electric Assn, Inc
Raft Rural Elec Coop Inc

Virginia

Mecklenburg Electric Cooperative
Prince George Electric Coop
Rappahannock Electric Coop
Southside Electric Coop, Inc

Vermont

Washington Electric Coop

Washington

Big Bend Electric Coop, Inc
Inland Power & Light Company
Kootenai Electric Cooperative
Lakeview Light & Power
Modern Electric Water Company
Peninsula Light Company

Wisconsin

Adams-Columbia Electric Coop
Dunn County Electric Coop
East Central Energy
Oakdale Electric Coop
Polk-Burnett Electric Coop
Riverland Energy Cooperative
Scenic Rivers Energy Coop

Wyoming

Fall River Rural Elec Coop Inc
High Plains Power Inc
Lower Valley Energy Inc
Yampa Valley Electric Assn Inc

AMI Coop Commercial 100%

Alaska

Kodiak Electric Assn Inc

Alabama

Baldwin County El Member Corp
Central Alabama Electric Coop
Cherokee Electric Coop
Coosa Valley Electric Coop Inc
Covington Electric Coop, Inc
Cullman Electric Coop, Inc
Diverse Power Incorporated
Joe Wheeler Elec Member Corp
Marshall-De Kalb Electric Coop
North Alabama Electric Coop
Sand Mountain Electric Coop
Singing River Elec Cooperative
South Alabama Elec Coop, Inc
Southern Pine Elec Coop, Inc
Wiregrass Electric Coop, Inc

Arkansas

Arkansas Valley Elec Coop Corp
Carroll Electric Coop Corp
Clay County Electric Coop Corp
First Electric Coop Corp
Ozarks Electric Coop Corp
Woodruff Electric Coop Corp

Arizona

Dixie Escalante R E A, Inc
Trico Electric Cooperative Inc

Colorado

Delta Montrose Electric Assn
Grand Valley Power
High West Energy, Inc
Holy Cross Electric Assn, Inc
K C Electric Association
Morgan County Rural Elec Assn
Mountain Parks Electric, Inc
Poudre Valley REA, Inc
San Luis Valley R E C, Inc
San Miguel Power Assn, Inc
Southeast Colorado Power Assn
Tri-County Electric Coop, Inc
United Power, Inc
Wheatland Electric Coop, Inc
Y-W Electric Assn Inc
Yampa Valley Electric Assn Inc

Florida

Central Florida Elec Coop, Inc
Choctawhatche Elec Coop, Inc
Glades Electric Coop, Inc
Okefenoke Rural El Member Corp
Peace River Electric Coop, Inc
Suwannee Valley Elec Coop Inc
Tri-County Electric Coop, Inc

Georgia

Altamaha Electric Member Corp
Blue Ridge Mountain EMC
Carroll Electric Member Corp
Coastal Electric Member Corp
Cobb Electric Membership Corp
Colquitt Electric Membership Corp
Coweta-Fayette El Member Corp
Diverse Power Incorporated
Excelsior Electric Member Corp
Flint Electric Membership Corp
Habersham Electric Membership Corp
Haywood Electric Member Corp
Irwin Electric Membership Corp
Mitchell Electric Member Corp
Oconee Electric Member Corp
Okefenoke Rural El Member Corp
Planters Electric Member Corp
Satilla Rural Elec Member Corporation
Snapping Shoals El Member Corp
Southern Rivers Energy
Sumter Electric Member Corp
Tri-County Elec Member Corp (GA)
Walton Electric Member Corp
Washington Elec Member Corp

Appendix - Coop with 100% AMI

AMI Coop Commercial 100% Cont.

Iowa
Butler County Rural Elec Coop
Consumers Energy
East-Central Iowa Rural Elec Coop
Eastern Iowa Light & Power Coop
Heartland Power Coop
Iowa Lakes Electric Coop
Linn County REC
Maquoketa Valley Rrl Elec Coop
Midland Power Coop
MiEnergy Cooperative

Idaho
Kootenai Electric Cooperative
Missoula Electric Coop, Inc
Salmon River Electric Coop Inc
United Electric Co-op, Inc

Illinois
Coles-Moultrie Electric Coop
Jo-Carroll Energy, Inc
Menard Electric Coop
Southwestern Electric Coop Inc
Wayne-White Counties Elec Coop

Indiana
Bartholomew County Rural E M C
Boone County Rural EMC
Daviss Martin County R E M C
Decatur County Rural E M C
Dubois Rural Electric Coop Inc
Harrison County Rural E M C
Heartland REMC
Jackson County Rural E M C
Jasper County Rural E M C
Johnson County Rural E M C
Kankakee Valley Rural E M C
NineStar Connect
Noble County R E M C
Paulding-Putman Elec Coop, Inc
South Central Indiana REMC
Southern Indiana R E C, Inc
Tipmont Rural Elec Member Corp
Utilities Dist-Western IN REMC
Western Indiana Energy REMC
Whitewater Valley Rural EMC

Kansas
Alfalfa Electric Coop, Inc
FreeState Electric Coop
Midwest Energy Inc
Pioneer Electric Coop, Inc
Southern Pioneer Electric Company
Tri-County Electric Coop, Inc
Victory Electric Coop Assn Inc
Western Coop Electric Assn Inc
Wheatland Electric Coop, Inc

Kentucky
Clark Energy Coop Inc
Cumberland Valley Electric, Inc.
Fleming-Mason Energy Coop Inc
Grayson Rural Electric Coop Corp
Inter County Energy Coop Corp
Jackson Energy Coop Corp
Jackson Purchase Energy Corporation
Kenergy Corp
Nolin Rural Electric Coop Corp
Owen Electric Coop Inc
Pennyrile Rural Electric Coop
Salt River Electric Coop Corp
Shelby Energy Co-op, Inc
South Kentucky Rural E C C
Taylor County Rural E C C
Tri-County Elec Member Corp
Warren Rural Elec Coop Corp
West Kentucky Rural E C C

Louisiana
Beauregard Electric Coop, Inc
Claiborne Electric Coop, Inc
Northeast Louisiana Power Coop Inc.

Maryland
A & N Electric Coop
Choptank Electric Cooperative, Inc

Michigan
Cherryland Electric Coop Inc
Great Lakes Energy Coop
Tri-County Electric Coop

Minnesota
Beltrami Electric Coop, Inc
BENCO Electric Cooperative
Connexus Energy
Federated Rural Electric Assn
Freeborn-Mower Electric Cooperative
Lake Country Power
Meeker Coop Light & Power Assn
MiEnergy Cooperative

AMI Coop Commercial 100% Cont.

Minnesota Cont.
Minnesota Valley Electric Coop
Runestone Electric Assn
Sioux Valley SW Elec Coop
Stearns Cooperative Elec Assn
Wild Rice Electric Coop, Inc

Missouri
Black River Electric Coop
Boone Electric Coop
Callaway Electric Cooperative
Carroll Electric Coop Corp
Central Missouri Elec Coop Inc
Citizens Electric Corporation
Clay County Electric Coop Corp
Co-Mo Electric Coop Inc
Consolidated Electric Coop
Cuivre River Electric Coop Inc
Farmers Electric Coop, Inc
Intercounty Electric Coop Assn
Laclede Electric Coop, Inc
New-Mac Electric Coop, Inc
Osage Valley Elec Coop Assn
Ozark Electric Coop Inc
SEMO Electric Cooperative
Southwest Electric Coop, Inc
Webster Electric Coop

Mississippi
4-County Electric Power Assn
Alcorn County Elec Power Assn
Coast Electric Power Assn
Delta Electric Power Assn
Dixie Electric Power Assn
East Mississippi Elec Pwr Assn
Magnolia Electric Power Assn
Monroe County Elec Power Assn
North East Mississippi EPA
Northcentral Mississippi E P A
Prentiss County Elec Pwr Assn
Singing River Elec Cooperative
Southwest Mississippi E P A
Tombigbee Electric Power Assn

Montana
Fall River Rural Elec Coop Inc
Missoula Electric Coop, Inc

North Carolina
Albemarle Electric Member Corp
Blue Ridge Elec Member Corp
Blue Ridge Mountain EMC
Brunswick Electric Member Corp
Carteret-Craven El Member Corp
Edgecombe-Martin County E M C
EnergyUnited Elec Member Corp
Four County Elec Member Corp
Jones-Onslow Elec Member Corp
Lumbee River Elec Member Corp
Mecklenburg Electric Cooperative
Mountain Electric Coop, Inc
Pee Dee Electric Member Corp
Roanoke Electric Member Corp
Rutherford Elec Member Corp
South River Elec Member Corp
Surry-Yadkin Elec Member Corp
Tideland Electric Member Corp
Union Electric Membership Corp
Wake Electric Membership Corp

North Dakota
Capital Electric Coop, Inc
Cass County Elec Coop Inc
Verendrye Electric Coop Inc

Nebraska
High West Energy, Inc
Highline Electric Assn

New Hampshire
New Hampshire Elec Coop Inc

New Mexico
Central New Mexico El Coop, Inc
Central Valley Elec Coop, Inc
Otero County Electric Coop Inc
Rio Grande Electric Coop, Inc
Roosevelt County Elec Coop Inc
Tri-County Electric Coop, Inc

Nevada
Raft Rural Elec Coop Inc

Ohio
Buckeye Rural Elec Coop, Inc
Butler Rural Electric Coop Inc
Consolidated Electric Coop Inc
Hancock-Wood Electric Coop Inc
Midwest Electric, Inc
Paulding-Putman Elec Coop, Inc
Pioneer Rural Elec Coop, Inc
South Central Power Company
Union Rural Electric Coop, Inc

AMI Coop Commercial 100% Cont.

Oklahoma
Alfalfa Electric Coop, Inc
Arkansas Valley Elec Coop Corp
Canadian Valley Elec Coop, Inc
Central Rural Electric Cooperative, Inc
Choctaw Electric Coop Inc
Cimarron Electric Coop
CKenergy Electric Cooperative
Cookson Hills Elec Coop, Inc
Kay Electric Coop
Lake Region Electric Coop, Inc
Northeast Oklahoma Electric Co
Oklahoma Electric Coop Inc
Ozarks Electric Coop Corp
People's Electric Cooperative
Rural Electric Coop, Inc
Southwest Arkansas E C C
Tri-County Electric Coop, Inc
Verdigris Valley Elec Coop Inc

Oregon
Central Electric Coop Inc
Columbia Rural Elec Assn, Inc
Consumers Power, Inc
Midstate Electric Coop, Inc
Oregon Trail El Cons Coop, Inc
Umatilla Electric Coop Assn

Pennsylvania
Adams Electric Cooperative Inc
Bedford Rural Elec Coop, Inc
Central Electric Coop, Inc
REA Energy Coop Inc
Somerset Rural Elec Coop, Inc
Valley Rural Electric Coop Inc

South Carolina
Aiken Electric Coop Inc
Berkeley Electric Coop Inc
Black River Electric Coop,
Edisto Electric Coop, Inc
Haywood Electric Member Corp
Marlboro Electric Coop, Inc
Mid-Carolina Electric Coop Inc
Palmetto Electric Coop Inc
Pee Dee Electric Coop, Inc

South Dakota
Dakota Energy Coop Inc
Northern Electric Coop, Inc
Rosebud Electric Coop Inc
Sioux Valley SW Elec Coop
Southeastern Electric Coop Inc
West River Electric Assn Inc

Tennessee
Appalachian Electric Coop
Caney Fork Electric Coop, Inc
Cumberland Elec Member Corp
Duck River Elec Member Corp
Forked Deer Electric Coop, Inc
Fort Loudoun Electric Coop
Gibson Electric Members Corp
Meriwether Lewis Electric Coop
Mountain Electric Coop, Inc
Pickwick Electric Coop
Plateau Electric Cooperative
Powell Valley Electric Coop
South Kentucky Rural E C C
Tennessee Valley Electric Coop
Tri-County Elec Member Corp

Texas
Upper Cumberland E M C
Volunteer Electric Coop
Bandera Electric Coop, Inc
Bartlett Electric Coop, Inc
Big Country Electric Coop, Inc
Comanche County Elec Coop Assn
Concho Valley Elec Coop Inc
Cooke County Elec Coop Assn
Deaf Smith Electric Coop, Inc
Deep East Texas Elec Coop Inc
Greenbelt Electric Coop, Inc
Heart of Texas Electric Coop
Houston County Elec Coop Inc
Jasper-Newton Elec Coop, Inc
Karnes Electric Coop Inc
Lamar County Elec Coop Assn
Lamb County Electric Coop, Inc
Lighthouse Electric Coop, Inc
Magic Valley Electric Coop Inc
Pedernales Electric Coop, Inc
Rio Grande Electric Coop, Inc
Rusk County Electric Coop, Inc
San Houston Electric Coop Inc
San Bernard Electric Coop, Inc
San Patricio Electric Coop Inc
Southwest Arkansas E C C

Appendix - Coop with 100% AMI

AMI Coop Commercial 100% Cont.

Texas Cont.
Taylor Electric Coop Inc
Tri-County Electric Coop, Inc
United Electric Coop Service Inc
Upshur Rural Elec Coop Corp
Wood County Electric Coop, Inc
Utah
Dixie Escalante R E A, Inc
Raft Rural Elec Coop Inc
Virginia
Prince George Electric Coop
Rappahannock Electric Coop
Southside Electric Coop, Inc
Vermont
Washington Electric Coop
Washington
Columbia Rural Elec Assn, Inc
Kootenai Electric Cooperative
Lakeview Light & Power
Modern Electric Water Company
Peninsula Light Company
Wisconsin
Adams-Columbia Electric Coop
Barron Electric Coop
Dunn County Electric Coop
East Central Energy
Oakdale Electric Coop
Polk-Burnett Electric Coop
Riverland Energy Cooperative
Scenic Rivers Energy Coop
Wyoming
Fall River Rural Elec Coop Inc
High Plains Power Inc
High West Energy, Inc
Lower Valley Energy Inc
Yampa Valley Electric Assn Inc

AMI Coop Industrial 100%

Alaska
Chugach Electric Assn Inc
Kodiak Electric Assn Inc
Alabama
Central Alabama Electric Coop
Coosa Valley Electric Coop Inc
Covington Electric Coop, Inc
Cullman Electric Coop, Inc
Dixie Electric Coop
Franklin Electric Coop
Marshall-De Kalb Electric Coop
North Alabama Electric Coop
Sand Mountain Electric Coop
South Alabama Elec Coop, Inc
Tallapoosa River Elec Coop Inc
Arkansas
Arkansas Valley Elec Coop Corp
Clay County Electric Coop Corp
Ozarks Electric Coop Corp
Woodruff Electric Coop Corp
Arizona
Navapache Electric Coop, Inc
Trico Electric Cooperative Inc
Colorado
Delta Montrose Electric Assn
Grand Valley Power
High West Energy, Inc
Holy Cross Electric Assn, Inc
Intermountain Rural Elec Assn
K C Electric Association
Morgan County Rural Elec Assn
Mountain Parks Electric, Inc
San Luis Valley R E C, Inc
Southeast Colorado Power Assn
Tri-County Electric Coop, Inc
Yampa Valley Electric Assn Inc
Florida
Choctawhatche Elec Coop, Inc
Clay Electric Cooperative, Inc
Okefenoke Rural El Member Corp
Peace River Electric Coop, Inc
Suwannee Valley Elec Coop Inc
Tri-County Electric Coop, Inc
Georgia
Altamaha Electric Member Corp
Carroll Electric Member Corp
Central Georgia El Member Corp
Coastal Electric Member Corp
Cobb Electric Membership Corp
Colquitt Electric Membership Corp
Diverse Power Incorporated
Excelsior Electric Member Corp
Flint Electric Membership Corp
Grady Electric Membership Corp
Irwin Electric Membership Corp
North Georgia Elec Member Corp
Okefenoke Rural El Member Corp
Planters Electric Member Corp
Satilla Rural Elec Member Corporation
Snapping Shoals El Member Corp
Southern Rivers Energy
Sumter Electric Member Corp
Tri-County Elec Member Corp
Walton Electric Member Corp
Washington Elec Member Corp
Hawaii
Kauai Island Utility Cooperative
Iowa
Access Energy Coop
Butler County Rural Elec Coop
Consumers Energy
East-Central Iowa Rural Elec Coop
Eastern Iowa Light & Power Coop
Federated Rural Electric Assn
Heartland Power Coop
Iowa Lakes Electric Coop
Linn County REC
Midland Power Coop
MiEnergy Cooperative
North West Rural Electric Coop
Prairie Energy Coop
Idaho
Inland Power & Light Company
Kootenai Electric Cooperative
Raft Rural Elec Coop Inc
Salmon River Electric Coop Inc
United Electric Co-op, Inc
Illinois
Coles-Moultrie Electric Coop
Southwestern Electric Coop Inc
Wayne-White Counties Elec Coop

AMI Coop Industrial 100% Cont.

Indiana
Bartholomew County Rural E M C
Carroll-White REMC
Daviess Martin County R E M C
Decatur County Rural E M C
Dubois Rural Electric Coop Inc
Heartland REMC
Hendricks County Rural E M C
Jackson County Rural E M C
Johnson County Rural E M C
Kankakee Valley Rural E M C
NineStar Connect
Noble County R E M C
Northeastern Rural E M C
Paulding-Putman Elec Coop, Inc
South Central Indiana REMC
Southern Indiana R E C, Inc
Tipmont Rural Elec Member Corp
Utilities Dist-Western IN REMC
Western Indiana Energy REMC
Whitewater Valley Rural EMC
Kansas
Alfalfa Electric Coop, Inc
FreeState Electric Coop
Midwest Energy Inc
Tri-County Electric Coop, Inc
Victory Electric Coop Assn Inc
Western Coop Electric Assn Inc
Wheatland Electric Coop, Inc
Kentucky
Clark Energy Coop Inc
Cumberland Valley Electric, Inc.
Inter County Energy Coop Corp
Jackson Energy Coop Corp
Jackson Purchase Energy Corporation
Nolin Rural Electric Coop Corp
Owen Electric Coop Inc
Pennyrile Rural Electric Coop
Salt River Electric Coop Corp
Shelby Energy Co-op, Inc
South Kentucky Rural E C C
Taylor County Rural E C C
Tri-County Elec Member Corp
West Kentucky Rural E C C
Louisiana
Beauregard Electric Coop, Inc
Dixie Electric Membership Corp
Northeast Louisiana Power Coop Inc.
Maine
Eastern Maine Electric Coop
Michigan
Great Lakes Energy Coop
Tri-County Electric Coop
Minnesota
Beltrami Electric Coop, Inc
Connexus Energy
Federated Rural Electric Assn
Lake Country Power
Lake Region Electric Cooperative
Meeker Coop Light & Power Assn
MiEnergy Cooperative
People's Cooperative Services
Runestone Electric Assn
Sioux Valley SW Elec Coop
Stearns Cooperative Elec Assn
Steele-Waseca Cooperative Electric
Wild Rice Electric Coop, Inc
Missouri
Boone Electric Coop
Co-Mo Electric Coop Inc
Consolidated Electric Coop
Crawford Electric Coop, Inc
Cuivre River Electric Coop Inc
Farmers Electric Coop, Inc
Intercounty Electric Coop Assn
Laclede Electric Coop, Inc
New-Mac Electric Coop, Inc
Ozark Electric Coop Inc
SEMO Electric Cooperative
Three Rivers Electric Coop
Mississippi
4-County Electric Power Assn
Alcorn County Elec Power Assn
Delta Electric Power Assn
Dixie Electric Power Assn
Magnolia Electric Power Assn
Natchez Trace Elec Power Assn
North East Mississippi EPA
Northcentral Mississippi E P A
Prentiss County Elec Pwr Assn
Singing River Elec Cooperative

Appendix - Coop with 100% AMI

AMI Coop Industrial 100% Cont.

Mississippi Cont.

Southern Pine Electric Cooperative
Southwest Mississippi E P A
Tallahatchie Valley E P A
Tombigbee Electric Power Assn

Montana

Flathead Electric Coop Inc
Missoula Electric Coop, Inc

North Carolina

Albemarle Electric Member Corp
Blue Ridge Elec Member Corp
Edgecombe-Martin County E M C
EnergyUnited Elec Member Corp
Four County Elec Member Corp
French Broad Elec Member Corp
Jones-Onslow Elec Member Corp
Lumbee River Elec Member Corp
Pee Dee Electric Member Corp
Roanoke Electric Member Corp
Rutherford Elec Member Corp
South River Elec Member Corp
Surry-Yadkin Elec Member Corp
Tideland Electric Member Corp
Wake Electric Membership Corp

North Dakota

Basin Electric Power Coop
Capital Electric Coop, Inc
Cass County Elec Coop Inc
Nodak Electric Coop Inc
Verendrye Electric Coop Inc

Nebraska

High West Energy, Inc
Highline Electric Assn
Y-W Electric Assn Inc

New Hampshire

New Hampshire Elec Coop Inc

New Mexico

Rio Grande Electric Coop, Inc

Nevada

Raft Rural Elec Coop Inc

Ohio

Buckeye Rural Elec Coop, Inc
Butler Rural Electric Coop Inc
Consolidated Electric Coop Inc
Hancock-Wood Electric Coop Inc
Holmes-Wayne Electric Coop Inc
Licking Rural Electric Inc
Paulding-Putman Elec Coop, Inc
South Central Power Company

Oklahoma

Alfalfa Electric Coop, Inc
Canadian Valley Elec Coop, Inc
Central Rural Electric Cooperative, Inc
Cimarron Electric Coop
CKenergy Electric Cooperative
Cookson Hills Elec Coop, Inc
Cotton Electric Coop, Inc
Kay Electric Coop

Lake Region Electric Coop, Inc
Northeast Oklahoma Electric Co
Oklahoma Electric Coop Inc
Ozarks Electric Coop Corp
People's Electric Cooperative
Tri-County Electric Coop, Inc
Verdigris Valley Elec Coop Inc

Oregon

Central Electric Coop Inc
Columbia Rural Elec Assn, Inc
Consumers Power, Inc
Coos-Curry Electric Coop, Inc
Lane Electric Coop Inc
Midstate Electric Coop, Inc
Oregon Trail El Cons Coop, Inc
Salem Electric
Umatilla Electric Coop Assn

Pennsylvania

Adams Electric Cooperative Inc
Bedford Rural Elec Coop, Inc
Central Electric Coop, Inc
Claverack Rural Elec Coop Inc
REA Energy Coop Inc
Somerset Rural Elec Coop, Inc
Tri-County Rural Elec Coop Inc
Valley Rural Electric Coop Inc

South Carolina

Aiken Electric Coop Inc
Black River Electric Coop, Inc
Edisto Electric Coop, Inc
Mid-Carolina Electric Coop Inc
Palmetto Electric Coop Inc

AMI Coop Industrial 100% Cont.

South Dakota

Black Hills Electric Coop, Inc
Dakota Energy Coop Inc
Northern Electric Coop, Inc
Rosebud Electric Coop Inc
Sioux Valley SW Elec Coop
Southeastern Electric Coop Inc
West River Electric Assn Inc

Tennessee

Appalachian Electric Coop
Caney Fork Electric Coop, Inc
Cumberland Elec Member Corp
Duck River Elec Member Corp
Fort Loudoun Electric Coop
Gibson Electric Members Corp
Meriwether Lewis Electric Coop
Middle Tennessee E M C
Mountain Electric Coop, Inc
Pickwick Electric Coop
Plateau Electric Cooperative
Powell Valley Electric Coop
Sequachee Valley Electric Coop
South Kentucky Rural E C C
Southwest Tennessee E M C
Tennessee Valley Electric Coop
Tri-County Elec Member Corp
Upper Cumberland E M C
Volunteer Electric Coop

Texas

Bandera Electric Coop, Inc
Comanche County Elec Coop Assn
Concho Valley Elec Coop Inc
Cooke County Elec Coop Assn
Deaf Smith Electric Coop, Inc
Farmers Electric Coop, Inc
Greenbelt Electric Coop, Inc
Heart of Texas Electric Coop
Houston County Elec Coop Inc
Jackson Electric Coop, Inc
Jasper-Newton Elec Coop, Inc
Karnes Electric Coop Inc
Lamb County Electric Coop, Inc
Lighthouse Electric Coop, Inc
Magic Valley Electric Coop Inc
Nueces Electric Cooperative
Pedernales Electric Coop, Inc
Rio Grande Electric Coop, Inc
Sam Houston Electric Coop Inc
San Bernard Electric Coop, Inc
San Patricio Electric Coop Inc
Taylor Electric Coop Inc
Tri-County Electric Coop, Inc
United Electric Coop Service Inc
Victoria Electric Coop, Inc

Utah

Dixie Escalante R E A, Inc
Empire Electric Assn, Inc
Raft Rural Elec Coop Inc

Virginia

A & N Electric Coop
Northern Virginia Elec Coop
Powell Valley Electric Coop
Prince George Electric Coop
Rappahannock Electric Coop
Southside Electric Coop, Inc

Vermont

Washington Electric Coop

Washington

Big Bend Electric Coop, Inc
Kootenai Electric Cooperative
Lakeview Light & Power

Wisconsin

Barron Electric Coop
Dunn County Electric Coop
Oakdale Electric Coop
Polk-Burnett Electric Coop
Riverland Energy Cooperative
Scenic Rivers Energy Coop

Wyoming

High Plains Power Inc
Lower Valley Energy Inc



Discover the humans in your data.